

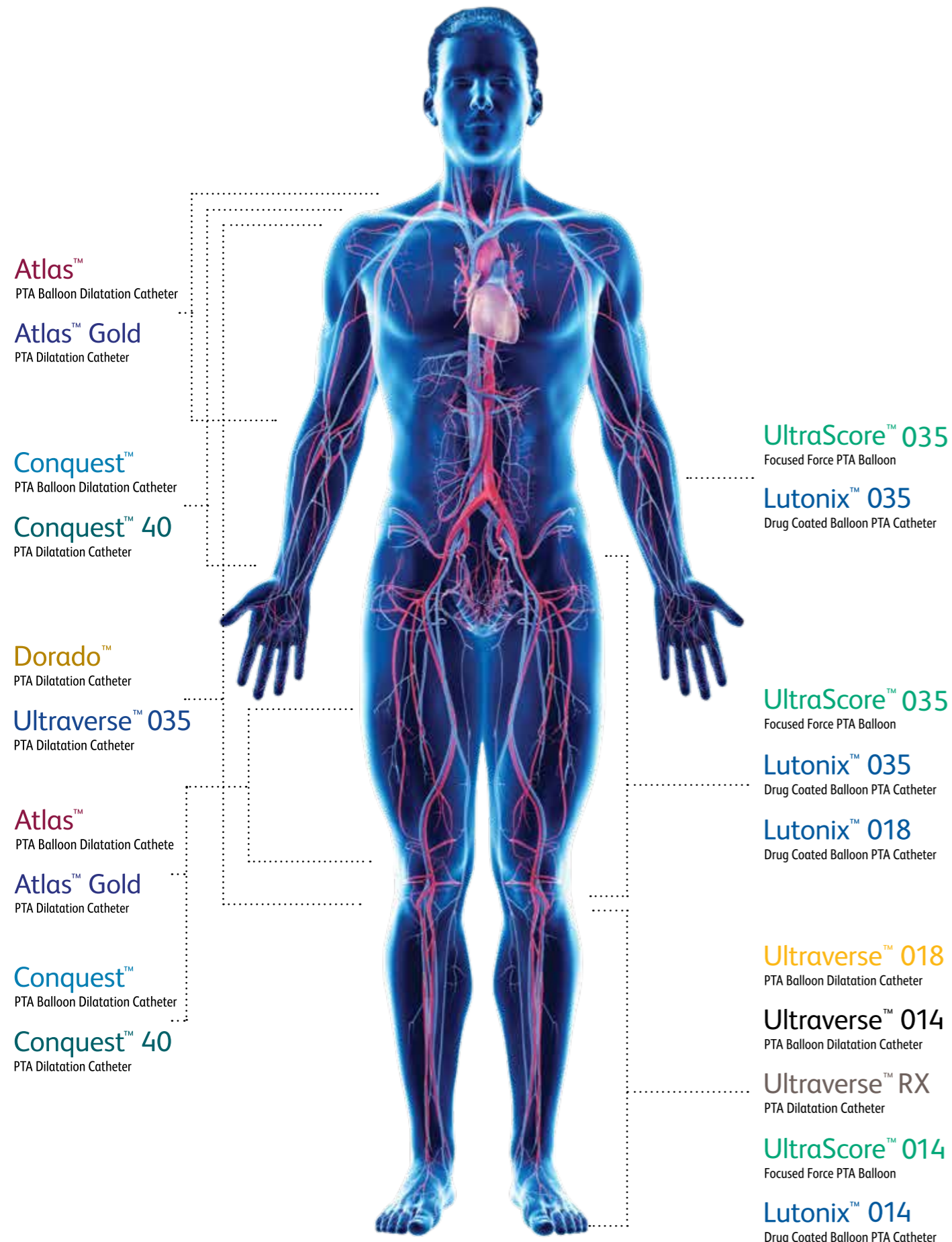
Leading the Way in PTA

BD PTA Family of Products



A Brief History of Anatomical Solutions

As a category leader in the peripheral vascular industry, BD takes pride in fulfilling the clinical needs of our customers and patients through continuous innovation and improvement. We do this by introducing surgical and interventional devices for peripheral vascular patency, while providing exceptional service and support to surgeons, interventionalists and radiologists.



PTA Solutions Table of Contents

Drug Coated Balloon Solutions for .035"/.018"/.014"

Lutonix™ 035 Drug Coated Balloon PTA Catheter	7
Lutonix™ 018 Drug Coated Balloon PTA Catheter	8
Lutonix™ 014 Drug Coated Balloon PTA Catheter	9

Standard Solutions for .035"

Dorado™ PTA Dilatation Catheter	10
Ultraverse™ 035 PTA Dilatation Catheter	11

Large Diameter Vessel Solutions for .035"

Atlas™ PTA Balloon Dilatation Catheter	12
Atlas™ Gold PTA Dilatation Catheter	13

Ultra Non-Compliant Solutions for .035"

Conquest™ PTA Balloon Dilatation Catheter	14
Conquest™ 40 PTA Dilatation Catheter	15

Specialty Solutions for .035"/.014"

Ultraverse™ 035 Focused Force PTA Balloon	16
UltraScore™ 014 Focused Force PTA Balloon	17

Small Vessel Solutions for .014"/.018"

Ultraverse™ RX PTA Dilatation Catheter	18
Ultraverse™ 014 PTA Balloon Dilatation Catheter	19
Ultraverse™ 018 PTA Balloon Dilatation Catheter	20

Accessory Solutions

Presto™ Inflation Device	21
---------------------------------	----

Ordering Information

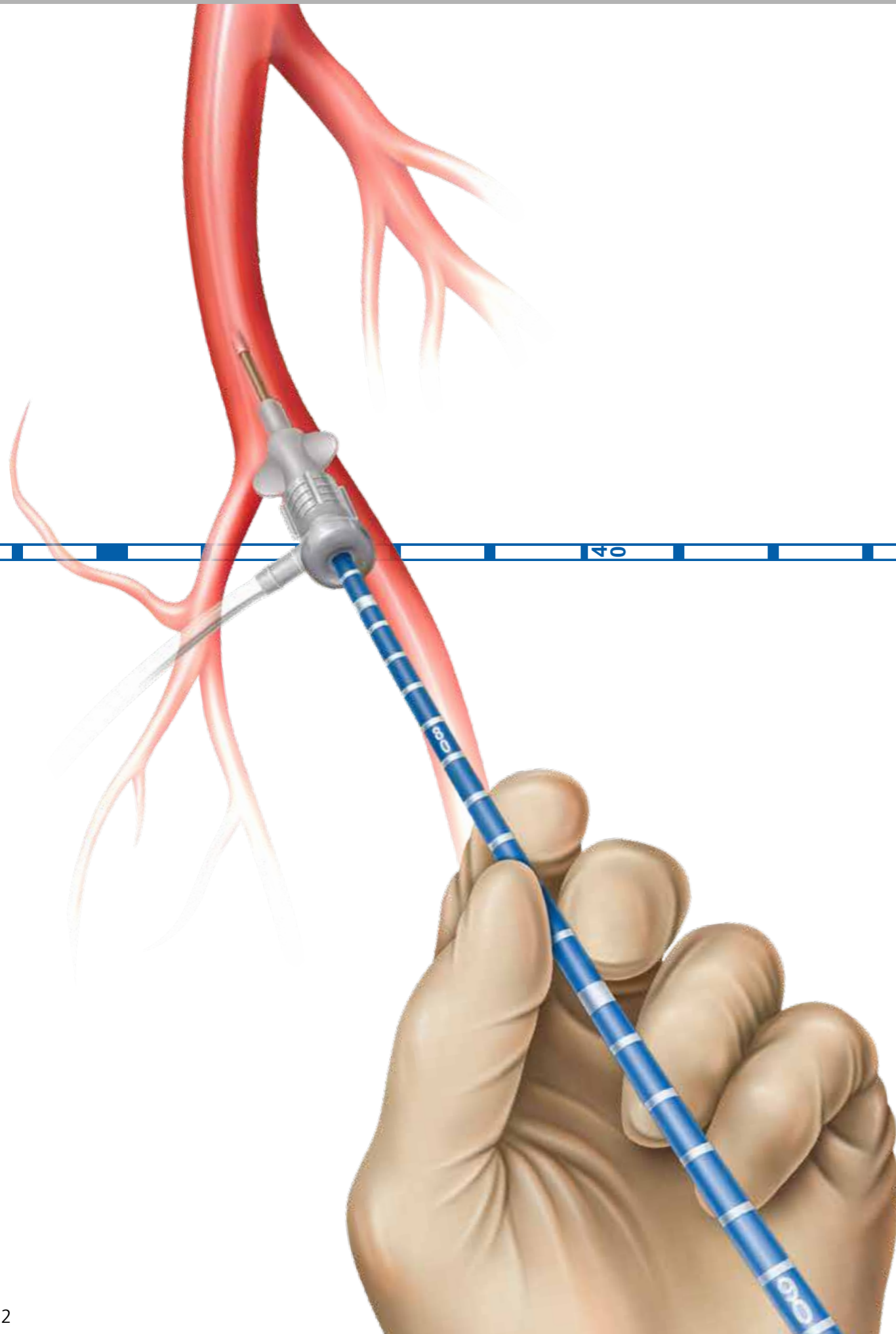
Ordering Information	22
----------------------	----

Quick Reference Guide

Quick Reference Guide	30
-----------------------	----

Key Terms

Key Terms	31
-----------	----



GeoAlign™ Marking System

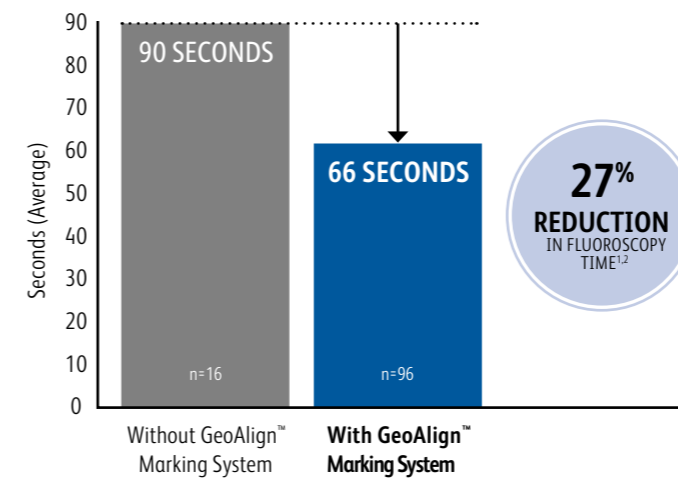
The GeoAlign™ Marking System is a non-radiopaque ruler on the catheter shaft measured from the distal tip. During repeat catheter placement, the GeoAlign™ Marking System is designed to:

- Help increase procedure efficiency and decrease radiation exposure by minimizing fluoroscopy time.
- Facilitate repeatable catheter alignment at the lesion
- Simplify length measurement between two intravascular points

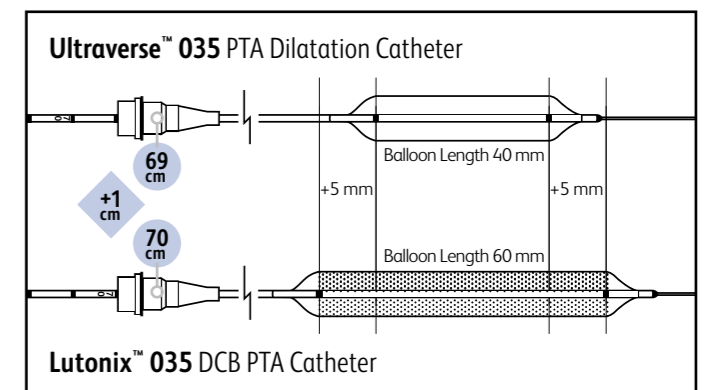
Marker bands are designated in 1 cm increments

Each 10 cm increment is labeled with the distance from the distal end of the balloon

Pre-Clinical Animal Model Arterial PTA Placement¹



Geographic Alignment

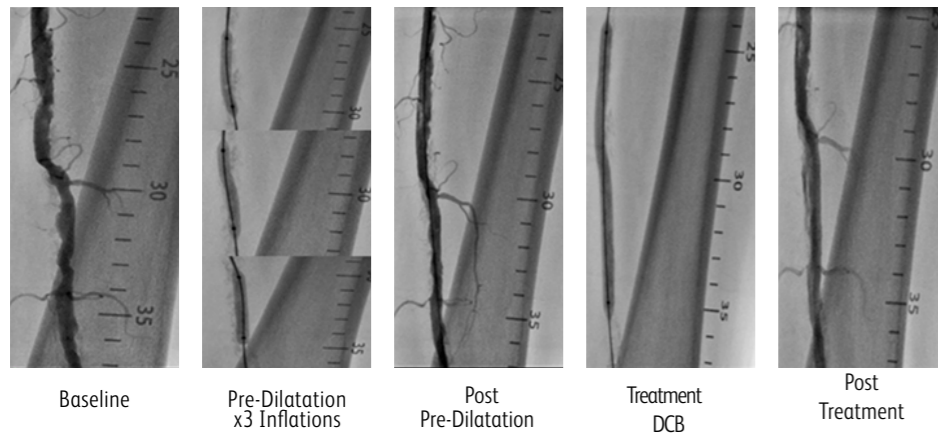


¹ Animal study (repeat PTA in swine artery) performed by 3 physicians who tested the Lutonix™ 035 DCB (no drug) and the Ultraverse™ 035 PTA Catheter, both with GeoAlign™ Markers, to POBA with no GeoAlign™ Markers (n=112, test n = 96, control n = 16). Animal data on file. Bard. Animal test results may not be indicative of clinical performance. Different test methods may yield different results.

² When the catheter is exposed to the vascular system, the location of the balloon should be confirmed while under high quality fluoroscopic observation.

Maximized Effectiveness Proven Safety

- All sizes 5F sheath profile compatible
- Zero preclinical evidence of downstream necrosis at 90 days*
- GeoAlign™ Marking System
- Indicated for de novo, restenotic, and in-stent restenotic lesions



Recommended Guidewire .035"	
Balloon Diameters	4-7 mm
Balloon Lengths	40 - 150 mm
Shaft Lengths	100 ,130 cm
Rated Burst Pressure	10 - 12 atm
Nominal Pressure	6 atm (4, 5 mm), 7 atm (6 mm,7 mm)
Drug	Paclitaxel (2 µg/mm ²)
Excipient	Polysorbate and Sorbitol

Lutonix™ 035
Drug Coated Balloon PTA Catheter

90.3%
FREEDOM FROM TLR
AT 24 MONTHS IN THE
GLOBAL REAL-WORLD
SFA REGISTRY¹

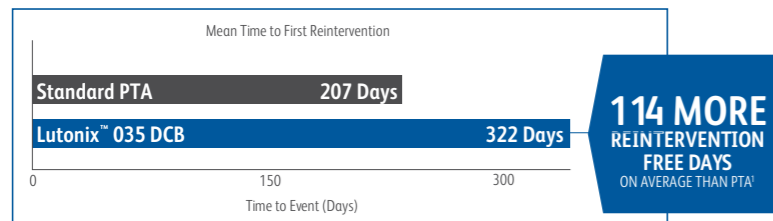
¹ Primary efficacy endpoint is defined as freedom from TLR at 12 months. Total of 648 subjects were evaluable for the primary efficacy endpoint analysis. The 12 month TLR Free rate by subject counts at 12 months was 93.4%. The Kaplan-Meier estimates TLR-Free survival was 94.1% at 12 months and 90.3% at 24 months. TLR-Free survival by lesion location was 94.7% (n=483) for SFA, 92.9% (n=86) for popliteal, and 92.3% (n=121) for patients with lesions in both SFA and popliteal. Data on file, Bard Peripheral Vascular, Inc.

• Comparison of Particulate Embolization after Femoral Artery Treatment with In.Pact- Admiral versus Lutonix- 035 Paclitaxel-Coated Balloons in Healthy Swine. Frank D. Kolodgie, PhD, Erica Pacheco, MS, Kazuyuki Yahagi, MD, Hiroyoshi Mori, MD, Elena Ladich, MD, and Renu Virmani, MD, JVIR September 2016. Animal test results may not be indicative of clinical performance. Different test methods may yield different results.

Please refer to the Lutonix-035 IFU for complete data sets and more detailed Lutonix- 035 DCB clinical information, including with regard to the Lutonix- DCB Global SFA Registry and the LEVANT 2 global, prospective, randomized, pivotal study.

Measurable Clinical Outcomes in AV Access

- At 6 months, the Lutonix™ 035 DCB demonstrated 71.4% TLPP in the Lutonix AV IDE Clinical Trial¹
- At 24 months, patients who were treated with a Lutonix™ 035 DCB went an average of 322 days before needing a reintervention compared to 207 days when treated with a PTA alone¹
- In the Lutonix DCB AV Global Registry, the Lutonix™ 035 DCB demonstrated 78.1% TLPP in native fistula, and 73.9% TLPP in native and synthetic (graft) access types, combined, at 6 months²



¹ Lutonix™ AV Clinical Trial data on file. N=285. At 6 months, treatment with Lutonix™ 035 DCB resulted in a primary patency rate of 71.4% versus 63.0% with PTA alone. Primary patency defined as ending with a clinically driven re-intervention of the target lesion or access thrombosis. The primary effectiveness analysis for superiority of DCB vs. PTA was not met with a one-sided p-value of p = 0.0562. Mean time to TLPP event for subjects with an event was longer for DCBs (321.8 vs. 207.4 d; p<0.0001). At 30 days, treatment with Lutonix™ 035 resulted in a freedom from primary safety event rate of 95.0% versus 95.8% with PTA alone. Primary safety defined as freedom from localized or systemic serious adverse events through 30 days that reasonably suggests the involvement of the AV access circuit. The primary safety endpoint for non-inferiority for DCB vs. PTA was met with one-sided p-value of p = 0.0019. Percentages reported are derived from Kaplan-Meier analyses.

² Lutonix Global AV Registry data on file. N=320. At 6 months, treatment with Lutonix™ 035 DCB resulted in a target lesion primary patency (TLPP) rate of 73.9%. By access type, treatment with Lutonix™ 035 DCB resulted in a TLPP of 78.1% for native fistulas only (240/320) and 61.9% for synthetic (graft) only (80/320). TLPP defined as the interval following index procedure intervention until clinically driven reintervention of the target lesion or access thrombosis. At 30 days, treatment with the Lutonix™ 035 DCB resulted in a freedom from primary safety event rate of 96.1%. Primary safety defined as freedom from any serious adverse event(s) involving the AV access circuit through 30 days. Percentages reported are estimated based on Kaplan-Meier estimates.

¹ Lutonix™ AV Clinical Trial data on file. N=285. At 6 months, treatment with Lutonix™ 035 DCB resulted in a primary patency rate of 71.4% versus 63.0% with PTA alone. Primary patency defined as ending with a clinically driven re-intervention of the target lesion or access thrombosis. The primary effectiveness analysis for superiority of DCB vs. PTA was not met with a one-sided p-value of p = 0.0562. Number of interventions required to maintain TLP at 6 months were 44 in DCB arm versus 64 in the PTA arm. At 30 days, treatment with Lutonix™ 035 resulted in a freedom from primary safety event rate of 95.0% versus 95.8% with PTA alone. Primary safety defined as freedom from localized or systemic serious adverse events through 30 days that reasonably suggests the involvement of the AV access circuit. The primary safety endpoint for noninferiority for DCB vs. PTA was met with one-sided p-value of p = 0.0019. Percentages reported are derived from Kaplan-Meier analyses. Mean time to TLPP event for subjects with an event was longer for DCBs (321.8 vs. 207.4 d; p<.0001)

Reintervention Free Days

At 24 months, patients treated with a Lutonix™ 035 Drug Coated Balloon PTA Catheter went an average of 322 days before receiving a target lesion reintervention compared to 207 days when treated with PTA alone.¹

Recommended Guidewire .035"	
Balloon Diameters	4 - 12 mm
Balloon Lengths	40 - 80 mm
Shaft Lengths	75, 100 cm
Rated Burst Pressure	up to 12 atm
Nominal Pressure	6 - 7 atm
Drug	Paclitaxel (2 µg/mm ²)
Excipient	Polysorbate and Sorbitol

Lutonix™ 035

Drug Coated Balloon PTA Catheter

Delivering More Options with an 018 DCB

- The Lutonix™ 018 DCB is designed to:
- Perform over small guidewires (up to .018")
- Enable alternative access (all sizes 5F or less)
- Utilizes the same proven drug coating formulation as the Lutonix™ 035 DCB, and has a 20% lower crossing profile¹

Recommended Guidewire .018"	
Balloon Diameters	4 - 7 mm
Balloon Lengths	40 - 220 mm
Shaft Lengths	100, 130 cm
Rated Burst Pressure	10 - 12 atm
Nominal Pressure	6 - 7 atm
Drug	Paclitaxel (2 µg/mm ²)
Excipient	Polysorbate and Sorbitol

Lutonix™ 018 Drug Coated Balloon PTA Catheter

¹ Data on file. BD, Tempe, AZ. 4 x 220 mm Lutonix™ 035 DCB N=25, 4 x 220 Lutonix™ 018 DCB N = 30. Bench test results may not necessarily be indicative of clinical performance. Different tests may yield different results.

Go Further with Lutonix™ 014 DCB

The LUTONIX™ 014 DCB demonstrated non-inferior safety and 20.7% improved primary patency over PTA* in a rigorous Level 1, Randomized Clinical Trial.

The LUTONIX™ 014 product line features:

- All 4F sheath compatibility
- Dual distal marker bands
- GEOALIGN™ Marking System

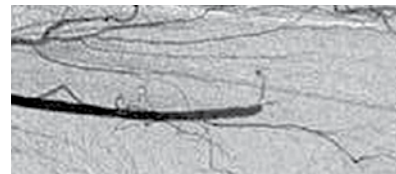
Recommended Guidewire .014"	
Balloon Diameters	2 - 4 mm
Balloon Lengths	40 - 150 mm
Shaft Lengths	150 cm
Rated Burst Pressure	15 atm
Nominal Pressure	6 - 7 atm
Drug	Paclitaxel (2 µg/mm ²)
Excipient	Polysorbate and Sorbitol

Lutonix™ 014 Drug Coated Balloon PTA Catheter

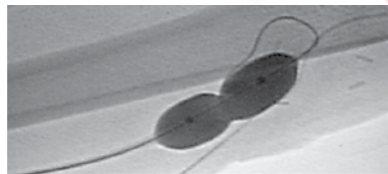
* Lutonix™ BTK IDE Clinical Data on File. Primary Efficacy is defined as freedom from composite of above-ankle amputation, target lesion occlusion, and clinically-driven target lesion revascularization. As 6 months, treatment with LUTONIX™ 014 DCB resulted in a primary efficacy rate of 73.7% (196/266) versus 63.5% with PTA alone (87/137). The primary effectiveness analysis for superiority of DCB vs. PTA was not met with a p-value of 0.0273. At 30 days, treatment with LUTONIX™ 014 DCB resulted in a freedom from primary safety event rate of 99.3% (283/285) versus 99.4% (154/155) for PTA alone. Primary Safety is defined as freedom from composite of all-cause death, above-ankle (index) amputation or major reintervention (new bypass graft, jump/interposition graft revision, or thrombectomy/ thrombolysis) of the index limb involving a below-the-knee. The primary safety analysis for non-inferiority for DCB vs. PTA was met with a p-value of <0.001. Percentages reported are derived from Kaplan-Meier analyses.

Predictable Performance

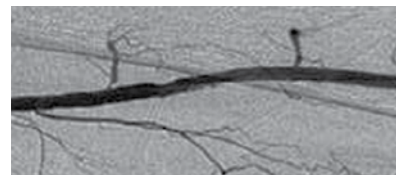
- Ultra non-compliant fiber balloon technology concentrates maximum dilatation force at the lesion
- Checker™ Flex Points provide increased flexibility in tortuous anatomy
- Indicated for post-stent dilatation



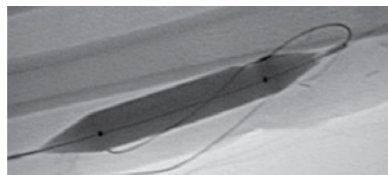
Pre Dorado™ Catheter balloon dilatation



Pre AV Access



Post Dorado™ Catheter balloon dilatation



Post AV Access

Recommended Guidewire .035"	
Balloon Diameters	3 - 10 mm
Balloon Lengths	20 - 200 mm
Shaft Lengths	40, 80, 120, 135 cm
Rated Burst Pressure	up to 24 atm
Nominal Pressure	8 atm
Material	Composite

Dorado™ PTA Dilatation Catheter

Performance Meets Precision

- Sheath profile 5F compatible up to 8 x 80 mm*
- Balloon Diameters: 3 - 12 mm
Balloon Lengths: 20 - 300 mm
- GeoAlign™ Marking System is designed to help reduce radiation exposure by limiting fluoroscopy time**



Recommended Guidewire .035"	
Balloon Diameters	3 - 12 mm
Balloon Lengths	20 - 300 mm
Shaft Lengths	75, 130 cm
Rated Burst Pressure	up to 21 atm
Nominal Pressure	6 - 8 atm
Material	Nylon

Ultraverse™ 035 PTA Dilatation Catheter

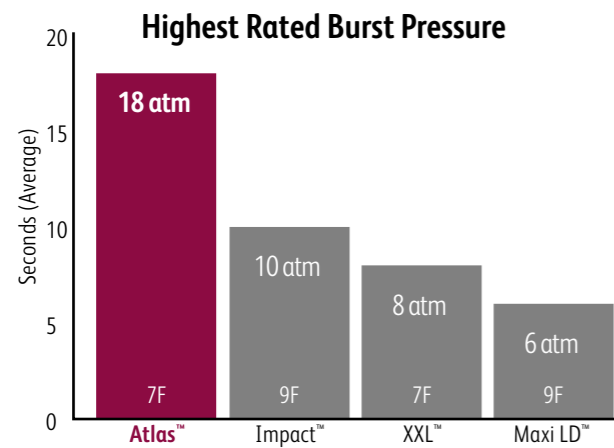
The GeoAlign™ Marking System is not a replacement for fluoroscopy. When the catheter is exposed to the vascular system, the location of the balloon should be confirmed while under high quality fluoroscopic observation.

* 7 x 250 mm and 7 x 300 mm sizes are 6F compatible

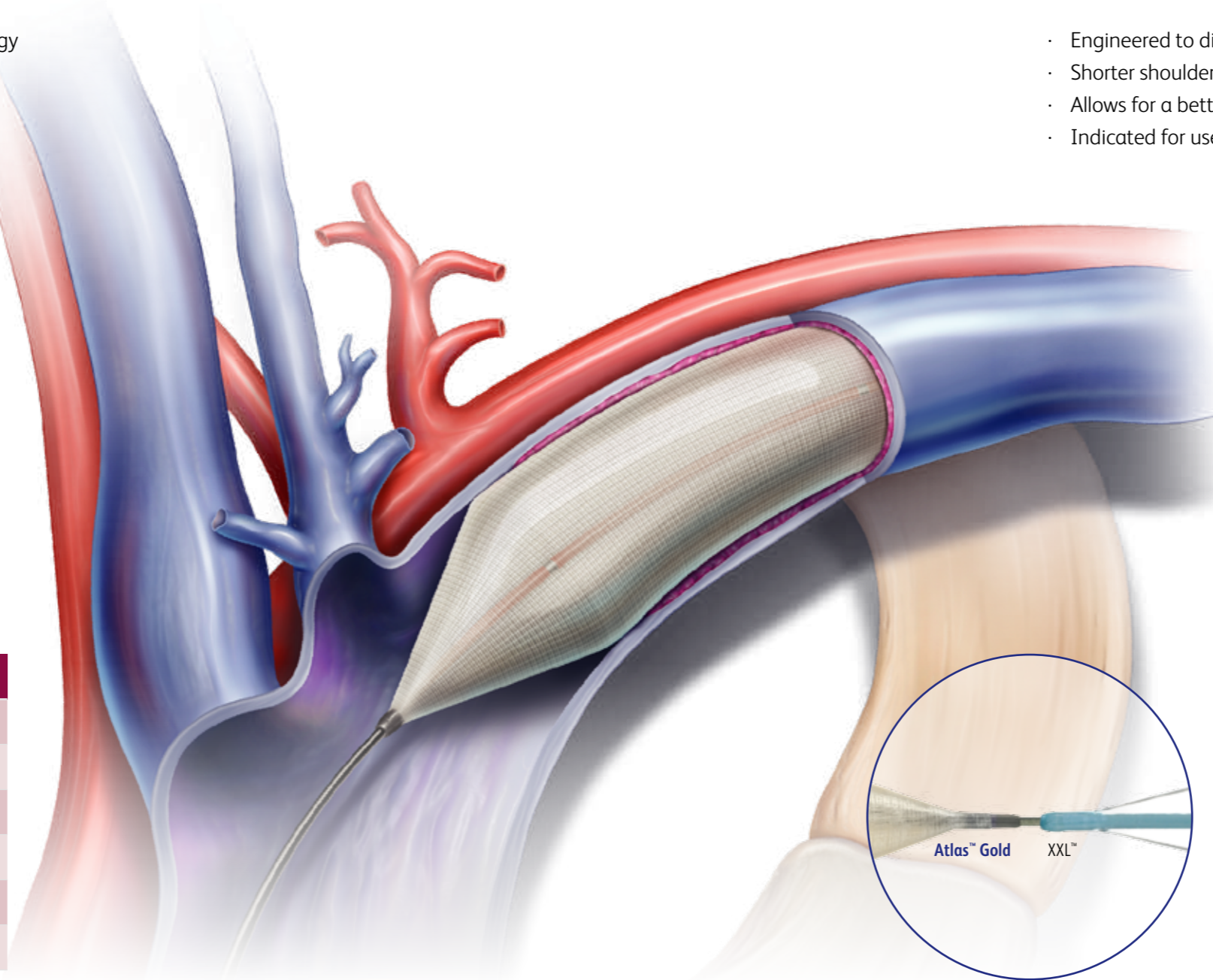
** When the catheter is exposed to the vascular system, it should be manipulated while under high-quality fluoroscopic observation

Ultra Non-Compliant Technology

- Large diameter, ultra non-compliant balloon technology
- Delivers maximum dilatation force to resistant lesions
- Large working range for maximum versatility

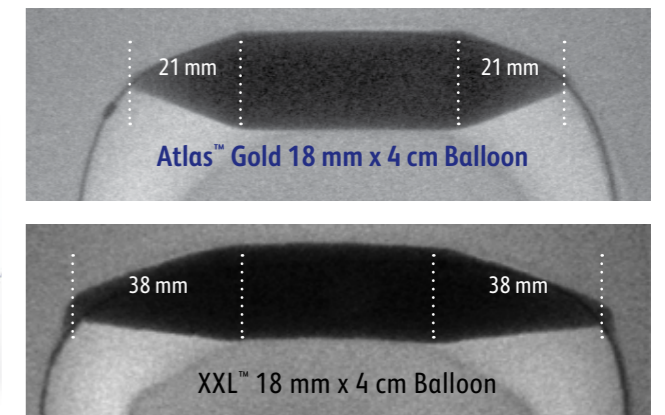


Recommended Guidewire .035"	
Balloon Diameters	12 - 26 mm
Balloon Lengths	20 - 60 mm
Shaft Lengths	75, 120 cm
Rated Burst Pressure	up to 18 atm
Nominal Pressure	4 - 6 atm
Material	Composite



Enhanced Trackability with Tapered Tip

- Engineered to dilate lesions in curved vessels
- Shorter shoulders designed to minimize vessel straightening
- Allows for a better fit
- Indicated for use in iliac and femoral veins, as well as AV dialysis fistulae



Short shoulders designed to minimize vessel straightening.*

Images shown are not to scale.

Recommended Guidewire .035"	
Balloon Diameters	12 - 26 mm
Balloon Lengths	20 - 60 mm
Shaft Lengths	80, 120 cm
Rated Burst Pressure	up to 18 atm
Nominal Pressure	4 - 6 atm
Material	Composite

Atlas™
PTA Balloon Dilatation Catheter

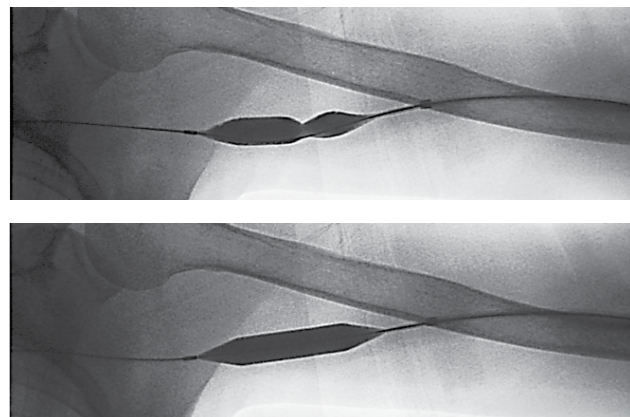
Atlas™ Gold
PTA Dilatation Catheter

* Information taken directly from each manufacturer's product brochure and IFU. Highest rated burst pressure among competitors listed.

* Simulated model. Bench test data on file. Bench results may not be indicative of clinical performance. Different test methods may yield different results.

The Force You Need to Conquer Resistant Lesions

- Allows high pressures without over-expansion
- Predictable balloon diameters
- Virtually no balloon growth beyond stated diameter, even at high pressures
- Delivers maximum forces to areas of most resistance

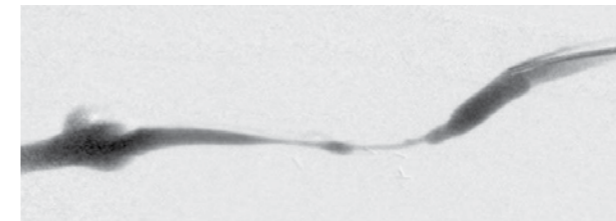
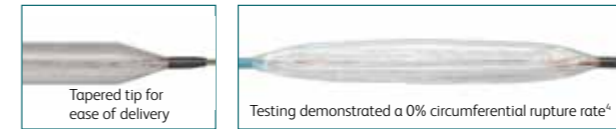


Recommended Guidewire .035"	
Balloon Diameters	5 - 12 mm
Balloon Lengths	20 - 80 mm
Shaft Lengths	50, 75, 120 cm
Rated Burst Pressure	up to 30 atm
Nominal Pressure	8 atm
Material	Composite

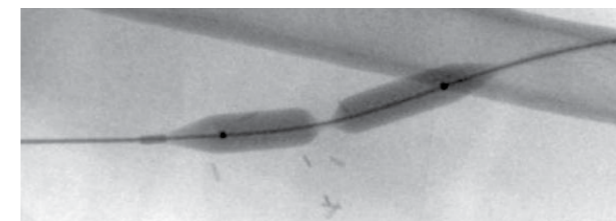
Conquest™
PTA Balloon Dilatation Catheter

Advancements in Product Features

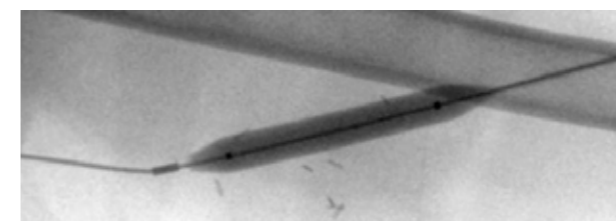
- 40 ATM pressures offered for sizes up to 8 mm 40 mm
- Labeled for syringe inflation



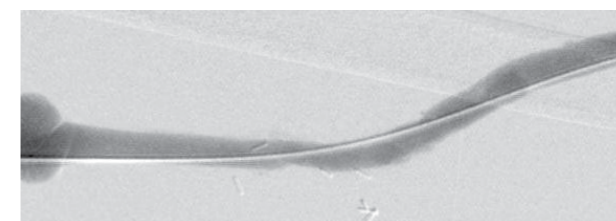
3 cm long high-grade stenosis involving the upper basilic vein



Unable to efface stenosis with standard, non-compliant balloon at 22 atm



Ultra high pressure and ultra non-compliance were needed to efface lesion.



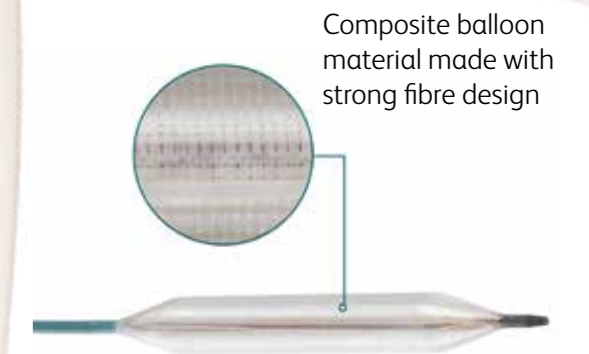
Post angioplasty, the vessel is open and the patient can resume dialysis

Images courtesy of Thomas Vesely, MD. Results from this case may not be predictive for all patients. Individual results may vary depending on a variety of patient specific attributes.

*Foering K, Chittams JL, Trerotola SO, Percutaneous Transluminal Angioplasty Balloon Inflation with Syringes: Who Needs an Inflator? J Vasc Interv Radiol. 2009; 20:629-633. Trerotola SO, et al. Prospective Study of Balloon Inflation Pressures and Other Technical Aspects of Hemodialysis Access Angioplasty J Vasc Interv Radiol. 2005; 16:1613-1618

Strength that Reaches High Atmospheres

- Enables a single balloon strategy with up to 40 atm
- Tapered tip for ease of delivery
- Literature suggests that 99% of stenoses in hemodialysis access can be treated in the range up to 40 atm*

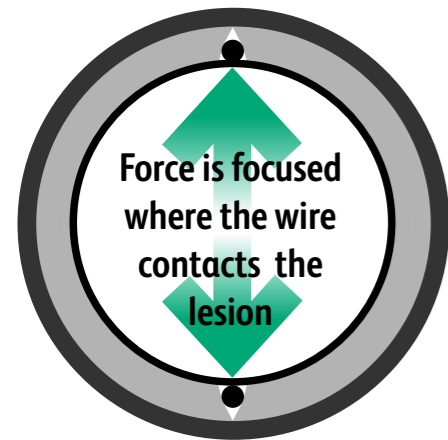


Recommended Guidewire .035"	
Balloon Diameters	4 - 12 mm
Balloon Lengths	20 - 100 mm
Shaft Lengths	50, 75 cm
Rated Burst Pressure	up to 40 atm
Nominal Pressure	8 atm
Material	Composite

Conquest™ 40
PTA Dilatation Catheter

Engineered for Focused Force

- Designed to fracture plaque longitudinally at lower inflation pressures than a standard PTA balloon of the same size
- 5F and 6F sheath compatibility
- GeoAlign™ Marking System designed to reduce fluoroscopy time*



Recommended Guidewire .035"	
Balloon Diameters	4 - 8 mm
Balloon Lengths	20 - 300 mm
Shaft Lengths	130 cm
Rated Burst Pressure	10 - 14 atm
Nominal Pressure	6 - 8 atm
Material	Nylon

UltraScore™ 035 Focused Force PTA Balloon

The GeoAlign™ Marking System is not a replacement for fluoroscopy. When the catheter is exposed to the vascular system, the location of the balloon should be confirmed while under high quality fluoroscopic observation.

* When the catheter is exposed to the vascular system, it should be manipulated while under high-quality fluoroscopic observation.

Controlled Plaque Modification

- Same focused force design as UltraScore™ 035 Focused Force PTA Balloon, but on an 014 guidewire platform
- 4F and 5F sheath compatibility
- Hydrophilic coating on all 0.14" sizes
- GeoAlign™ Marking System designed to reduce fluoroscopy time*

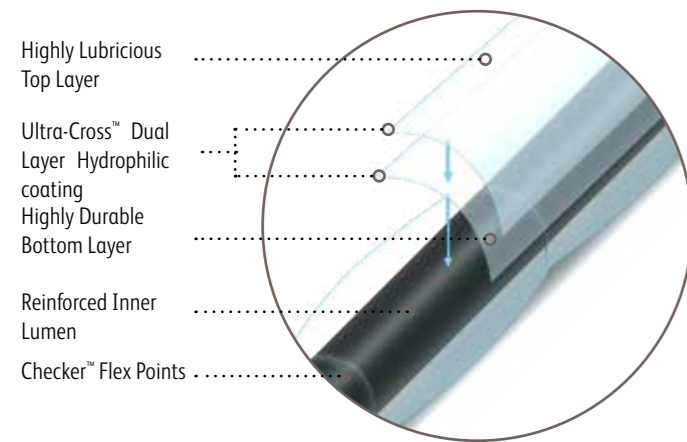
Recommended Guidewire .014"	
Balloon Diameters	2 - 7 mm
Balloon Lengths	20 - 300 mm
Shaft Lengths	150 cm
Rated Burst Pressure	10 - 14 atm
Nominal Pressure	6 atm
Material	Nylon

UltraScore™ 014 Focused Force PTA Balloon

The GeoAlign™ Marking System is not a replacement for fluoroscopy. When the catheter is exposed to the vascular system, the location of the balloon should be confirmed while under high quality fluoroscopic observation.

Going the Distance

- Exceptional trackability
- Balloon lengths up to 300 mm
- Ultra-Cross™ Dual Layer Hydrophilic coating designed to reduce friction
- Checker™ Flex Points engineered to allow the balloon to flex in tortuous anatomy
- Reinforced inner lumen provides improved axial strength constructed to cross tight lesions

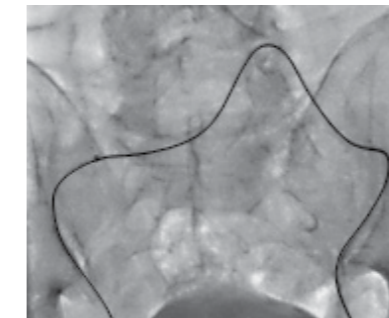


Recommended Guidewire .014"	
Balloon Diameters	1.25 - 7 mm
Balloon Lengths	15 - 300 mm
Shaft Lengths	150, 200 cm
Rated Burst Pressure	up to 16 atm
Nominal Pressure	6 atm
Material	Nylon

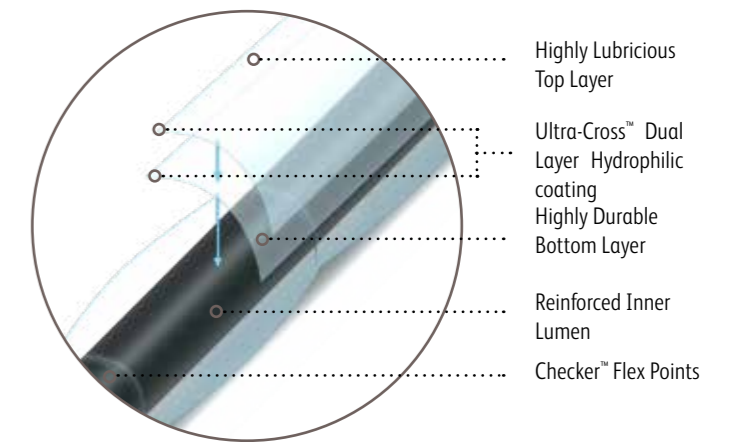
Ultraverse™ RX PTA Dilatation Catheter

Navigating the Extremes

- Designed to be delivered below-the-knee
- Excellent trackability
- Balloon lengths up to 300 mm
- Ultra-Cross™ Dual Layer Hydrophilic coating designed to reduce friction
- Checker™ Flex Points engineered to allow the balloon to flex in tortuous anatomy
- Reinforced inner lumen provides improved axial strength constructed to cross tight lesions



Ultraverse™ 014 Catheter navigating a tortuous anatomy



Recommended Guidewire .014"	
Balloon Diameters	1.5 - 5 mm
Balloon Lengths	20 - 300 mm
Shaft Lengths	150 cm
Rated Burst Pressure	13 - 16 atm
Nominal Pressure	6 atm
Material	Nylon

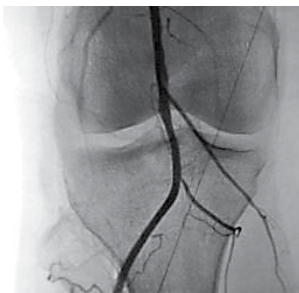
Ultraverse™ 014 PTA Balloon Dilatation Catheter

Navigating the Extremes

- Broad size matrix with balloon lengths up to 300 mm · Ultra-Cross™ Dual Layer Hydrophilic coating designed to reduce friction
- Checker™ Flex Points engineered to allow the balloon to flex in tortuous anatomy
- Reinforced inner lumen provides improved axial strength constructed to cross tight lesions



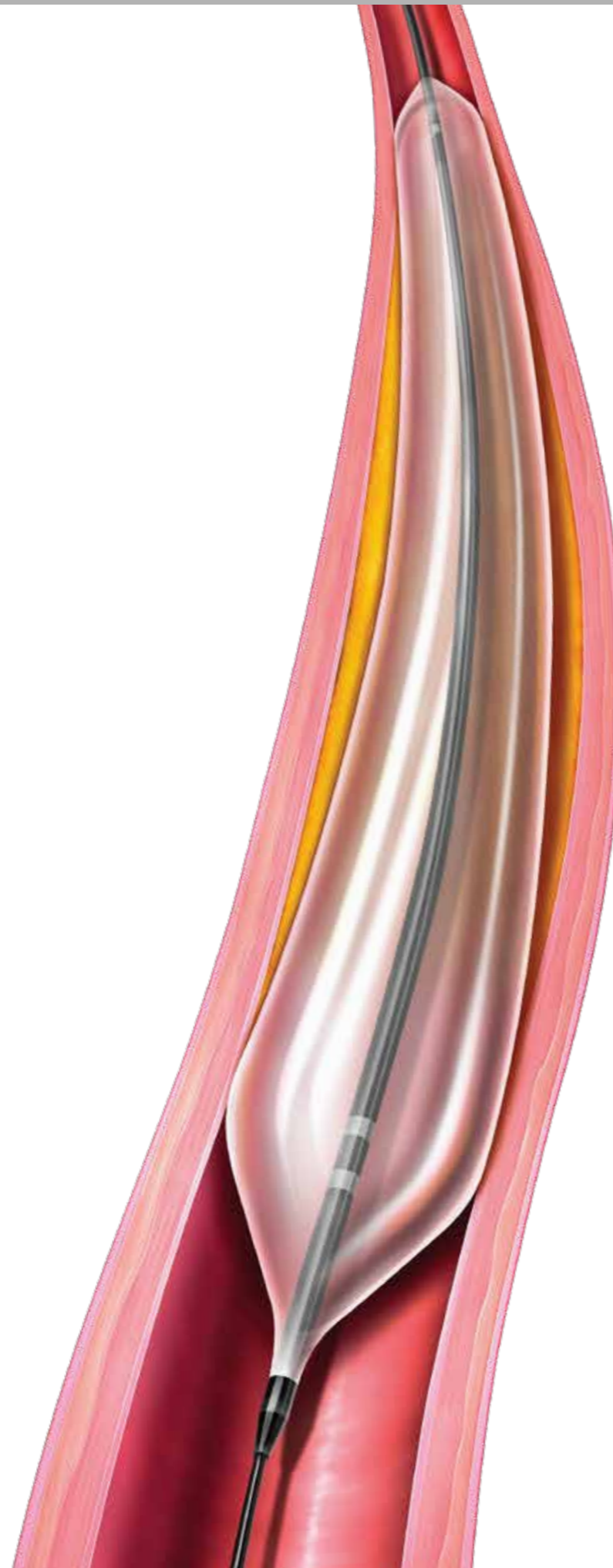
Popliteal CTO pre-intervention



Post crossing and Ultraverse™ 018 Catheter

Recommended Guidewire .018"	
Balloon Diameters	2 - 9 mm
Balloon Lengths	20 - 300 mm
Shaft Lengths	75, 130, 200 cm
Rated Burst Pressure	up to 16 atm
Nominal Pressure	6 atm
Material	Nylon

Ultraverse™ 018 PTA Balloon Dilatation Catheter



Inflating to Ultra-High Atmospheres

- The Presto™ Inflation Device offers a single solution treatment option.
- Designed to inflate large or small balloons with a single fill of the device
 - Large barrel allows for rapid and easy deflation
 - Ergonomic design allows for comfortable handling



Presto™ Inflation Device

ORDERING INFORMATION

Atlas™ .035" PTA Balloon Dilatation Catheter Large Diameter 75 cm & 120 cm Catheter Lengths					
Balloon Dia. (mm)	Balloon Length (mm)	RBP (atm)	Sheath Size (F)	75 cm Product Codes	120 cm Product Codes
12	20	18	7	<input type="checkbox"/> AT75122	<input type="checkbox"/> AT120122
	40	18	7	<input type="checkbox"/> AT75124	<input type="checkbox"/> AT120124
	60	18	7	<input type="checkbox"/> AT75126	
14	20	18	7	<input type="checkbox"/> AT75142	<input type="checkbox"/> AT120142
	40	18	7	<input type="checkbox"/> AT75144	<input type="checkbox"/> AT120144
	60	18	8	<input type="checkbox"/> AT75146	
16	20	18	8	<input type="checkbox"/> AT75162	<input type="checkbox"/> AT120162
	40	18	8	<input type="checkbox"/> AT75164	<input type="checkbox"/> AT120164
	60	16	8	<input type="checkbox"/> AT75166	
18	20	16	8	<input type="checkbox"/> AT75182	<input type="checkbox"/> AT120182
	40	16	8	<input type="checkbox"/> AT75184	<input type="checkbox"/> AT120184
	60	16	9	<input type="checkbox"/> AT75186	
20	20	16	9	<input type="checkbox"/> AT75202	<input type="checkbox"/> AT120202
	40	16	9	<input type="checkbox"/> AT75204	<input type="checkbox"/> AT120204
22	20	14	10	<input type="checkbox"/> AT75222	
	40	14	10	<input type="checkbox"/> AT75224	
24	20	14	10	<input type="checkbox"/> AT75242	
	40	14	10	<input type="checkbox"/> AT75244	
26	20	12	12	<input type="checkbox"/> AT75262	
	40	12	12	<input type="checkbox"/> AT75264	

Atlas™ Gold .035" PTA Dilatation Catheter Large Diameter 80 cm & 120 cm Catheter Lengths					
Balloon Dia. (mm)	Balloon Length (mm)	RBP (atm)	Sheath Size (F)	80 cm Product Codes	120 cm Product Codes
12	20	18	7	<input type="checkbox"/> ATG80122	<input type="checkbox"/> ATG120122
	40	18	7	<input type="checkbox"/> ATG80124	<input type="checkbox"/> ATG120124
	60	18	7	<input type="checkbox"/> ATG80126	<input type="checkbox"/> ATG120126
14	20	18	7	<input type="checkbox"/> ATG80142	<input type="checkbox"/> ATG120142
	40	18	7	<input type="checkbox"/> ATG80144	<input type="checkbox"/> ATG120144
	60	18	8	<input type="checkbox"/> ATG80146	<input type="checkbox"/> ATG120146
16	20	18	8	<input type="checkbox"/> ATG80162	<input type="checkbox"/> ATG120162
	40	18	8	<input type="checkbox"/> ATG80164	<input type="checkbox"/> ATG120164
	60	16	8	<input type="checkbox"/> ATG80166	<input type="checkbox"/> ATG120166
18	20	16	8	<input type="checkbox"/> ATG80182	<input type="checkbox"/> ATG120182
	40	16	8	<input type="checkbox"/> ATG80184	<input type="checkbox"/> ATG120184
	60	16	9	<input type="checkbox"/> ATG80186	<input type="checkbox"/> ATG120186
20	20	16	9	<input type="checkbox"/> ATG80202	<input type="checkbox"/> ATG120202
	40	16	9	<input type="checkbox"/> ATG80204	<input type="checkbox"/> ATG120204
22	20	14	10	<input type="checkbox"/> ATG80222	<input type="checkbox"/> ATG120222
	40	14	10	<input type="checkbox"/> ATG80224	<input type="checkbox"/> ATG120224
24	20	14	10	<input type="checkbox"/> ATG80242	<input type="checkbox"/> ATG120242
	40	14	10	<input type="checkbox"/> ATG80244	<input type="checkbox"/> ATG120244
26	20	12	12	<input type="checkbox"/> ATG80262	<input type="checkbox"/> ATG120262
	40	12	12	<input type="checkbox"/> ATG80264	<input type="checkbox"/> ATG120264

Conquest™ .035" PTA Balloon Dilatation Catheter High Pressure 50 cm, 75 cm & 120 cm Catheter Lengths						
Balloon Dia. (mm)	Balloon Length (mm)	RBP (atm)	Sheath Size (F)	50 cm Product Codes	75 cm Product Codes	120 cm Product Codes
5	20	30	6F	<input type="checkbox"/> CQ5052	<input type="checkbox"/> CQ7552	
	40	30	6F	<input type="checkbox"/> CQ5054	<input type="checkbox"/> CQ7554	<input type="checkbox"/> CQ12054
	80	27	6F	<input type="checkbox"/> CQ5058	<input type="checkbox"/> CQ7558	
6	20	30	6F	<input type="checkbox"/> CQ5062	<input type="checkbox"/> CQ7562	<input type="checkbox"/> CQ12062
	40	30	6F	<input type="checkbox"/> CQ5064	<input type="checkbox"/> CQ7564	<input type="checkbox"/> CQ12064
	80	27	6F	<input type="checkbox"/> CQ5068	<input type="checkbox"/> CQ7568	
7	20	30	6F	<input type="checkbox"/> CQ5072	<input type="checkbox"/> CQ7572	<input type="checkbox"/> CQ12072
	40	30	6F	<input type="checkbox"/> CQ5074	<input type="checkbox"/> CQ7574	<input type="checkbox"/> CQ12074
	60	27	6F	<input type="checkbox"/> CQ5076	<input type="checkbox"/> CQ7576	
	80	27	6F	<input type="checkbox"/> CQ5078	<input type="checkbox"/> CQ7578	
8	20	27	6F	<input type="checkbox"/> CQ5082	<input type="checkbox"/> CQ7582	<input type="checkbox"/> CQ12082
	30	27	6F	<input type="checkbox"/> CQ5083	<input type="checkbox"/> CQ7583	
	40	27	6F	<input type="checkbox"/> CQ5084	<input type="checkbox"/> CQ7584	<input type="checkbox"/> CQ12084
	60	25	6F	<input type="checkbox"/> CQ5086	<input type="checkbox"/> CQ7586	
9	20	26	7F	<input type="checkbox"/> CQ5092	<input type="checkbox"/> CQ7592	
	40	26	7F	<input type="checkbox"/> CQ5094	<input type="checkbox"/> CQ7594	<input type="checkbox"/> CQ12094
10	20	24	7F	<input type="checkbox"/> CQ75102		
	40	24	7F		<input type="checkbox"/> CQ75104	<input type="checkbox"/> CQ120104
12	20	20	8F	<input type="checkbox"/> CQ75122		
	40	20	8F	<input type="checkbox"/> CQ75124		

Conquest™ 40 .035" PTA Dilatation Catheter High Pressure 50 cm & 75 cm Catheter Lengths					
Balloon Dia. (mm)	Balloon Length (mm)	RBP (atm)	Sheath Size (F)	50 cm Product Codes	75 cm Product Codes
4	20	40	6	<input type="checkbox"/> CQF5042	<input type="checkbox"/> CQF7542
	40	40	6	<input type="checkbox"/> CQF5044	<input type="checkbox"/> CQF7544
	60	40	6	<input type="checkbox"/> CQF5046	<input type="checkbox"/> CQF7546
	80	40	6	<input type="checkbox"/> CQF5048	<input type="checkbox"/> CQF7548
5	20	40	6	<input type="checkbox"/> CQF50410	<input type="checkbox"/> CQF75410
	20	40	6	<input type="checkbox"/> CQF5052	<input type="checkbox"/> CQF7552
	40	40	6	<input type="checkbox"/> CQF5054	<input type="checkbox"/> CQF7554
	60	40	6	<input type="checkbox"/> CQF5056	<input type="checkbox"/> CQF7556
6	20	40	6	<input type="checkbox"/> CQF5058	<input type="checkbox"/> CQF7558
	40	40	6	<input type="checkbox"/> CQF50510	<input type="checkbox"/> CQF75510
	20	40	6	<input type="checkbox"/> CQF5062	<input type="checkbox"/> CQF7562
	40	40	6	<input type="checkbox"/> CQF5064	<input type="checkbox"/> CQF7564
7	20	40	6	<input type="checkbox"/> CQF5066	<input type="checkbox"/> CQF7566
	40	40	6	<input type="checkbox"/> CQF5068	<input type="checkbox"/> CQF7568
	60	40	6	<input type="checkbox"/> CQF50610	<input type="checkbox"/> CQF75610
	20	40	6	<input type="checkbox"/> CQF5072	<input type="checkbox"/> CQF7572
8	40	40	6	<input type="checkbox"/> CQF5074	<input type="checkbox"/> CQF7574
	60	40	6	<input type="checkbox"/> CQF5076	<input type="checkbox"/> CQF7576
	80	40	6	<input type="checkbox"/> CQF5078	<input type="checkbox"/> CQF7578
	100	40	6	<input type="checkbox"/> CQF50710	<input type="checkbox"/> CQF75710

CONTINUED >

ORDERING INFORMATION

Conquest™ 40 .035" PTA Dilatation Catheter High Pressure 50 cm & 75 cm Catheter Lengths					
Balloon Dia. (mm)	Balloon Length (mm)	RBP (atm)	Sheath Size (F)	50 cm Product Codes	75 cm Product Codes
8	20	40	6	<input type="checkbox"/> CQF5082	<input type="checkbox"/> CQF7582
	30	40	6	<input type="checkbox"/> CQF5083	<input type="checkbox"/> CQF7583
	40	40	6	<input type="checkbox"/> CQF5084	<input type="checkbox"/> CQF7584
	60	35	6	<input type="checkbox"/> CQF5086	<input type="checkbox"/> CQF7586
	80	35	6	<input type="checkbox"/> CQF5088	<input type="checkbox"/> CQF7588
9	100	35	6	<input type="checkbox"/> CQF50810	<input type="checkbox"/> CQF75810
	20	35	7	<input type="checkbox"/> CQF5092	<input type="checkbox"/> CQF7592
	40	35	7	<input type="checkbox"/> CQF5094	<input type="checkbox"/> CQF7594
	80	35	7	<input type="checkbox"/> CQF5098	<input type="checkbox"/> CQF7598
	40	35	7		
10	20	35	7		<input type="checkbox"/> CQF75102
	40	35	7		<input type="checkbox"/> CQF75104
	80	35	7		<input type="checkbox"/> CQF75108
12	20	30	8		<input type="checkbox"/> CQF75122
	40	30	8		<input type="checkbox"/> CQF75124

Dorado™ .035" PTA Dilatation Catheter Standard 40 cm & 80 cm Catheter Lengths					
Balloon Dia. (mm)	Balloon Length (mm)	RBP (atm)	Sheath Size (F)	40 cm Product Codes	80 cm Product Codes
3	20	24	5		<input type="checkbox"/> DR8032
	40	24	5		<input type="checkbox"/> DR8034
	100	24	5		<input type="checkbox"/> DR80310
4	20	24	5	<input type="checkbox"/> DR4042	<input type="checkbox"/> DR8042
	40	24	5	<input type="checkbox"/> DR4044	<input type="checkbox"/> DR8044
	100	24	5		<input type="checkbox"/> DR80410
5	20	24	5	<input type="checkbox"/> DR4052	<input type="checkbox"/> DR8052
	40	24	5	<input type="checkbox"/> DR4054	<input type="checkbox"/> DR8054
	60	24	5		<input type="checkbox"/> DR8056
	80	24	5		<input type="checkbox"/> DR8058
6	100	24	5		<input type="checkbox"/> DR80510
	20	24	6	<input type="checkbox"/> DR4062	<input type="checkbox"/> DR8062
	40	24	6	<input type="checkbox"/> DR4064	<input type="checkbox"/> DR8064
	60	24	6		<input type="checkbox"/> DR8066
7	80	24	6		<input type="checkbox"/> DR8068
	100	22	6		<input type="checkbox"/> DR80610
	120	22	6		<input type="checkbox"/> DR80612
	150	22	6		<input type="checkbox"/> DR80615
	170	22	6		<input type="checkbox"/> DR80617
8	200	22	6		<input type="checkbox"/> DR80620
	20	22	6	<input type="checkbox"/> DR4072	<input type="checkbox"/> DR8072
	40	22	6	<input type="checkbox"/> DR4074	<input type="checkbox"/> DR8074
	60	22	6		<input type="checkbox"/> DR8076
	80	22	6		<input type="checkbox"/> DR8078
	100	22	6		<input type="checkbox"/> DR80710
9	120	22	6		<input type="checkbox"/> DR80712

CONTINUED >

Dorado™ .035" PTA Dilatation Catheter Standard 40 cm & 80 cm Catheter Lengths					
Balloon Dia. (mm)	Balloon Length (mm)	RBP (atm)	Sheath Size (F)	40 cm Product Codes	80 cm Product Codes
7	150	22	6		<input type="checkbox"/> DR80715
	170	22	6		<input type="checkbox"/> DR80717
	200	22	6		<input type="checkbox"/> DR80720
8	20	22	6	<input type="checkbox"/> DR4082	<input type="checkbox"/> DR8082
	40	22	6	<input type="checkbox"/> DR4084	<input type="checkbox"/> DR8084
	60	22	6		<input type="checkbox"/> DR8086
	80	22	6		<input type="checkbox"/> DR8088
9	100	20	6		<input type="checkbox"/> DR80810
	20	20	6		<input type="checkbox"/> DR8092
	40	20	6	<input type="checkbox"/> DR4094	<input type="checkbox"/> DR8094
10	80	20	6		<input type="checkbox"/> DR8098
	20	20	6		<input type="checkbox"/> DR80102
11	40	20	6		<input type="checkbox"/> DR80104
	80	20	7		<input type="checkbox"/> DR80108

Dorado™ .035" PTA Dilatation Catheter Standard 120 cm & 135 cm Catheter Lengths					
Balloon Dia. (mm)	Balloon Length (mm)	RBP (atm)	Sheath Size (F)	120 cm Product Codes	135 cm Product Codes
3	20	24	5		<input type="checkbox"/> DR13532
	40	24	5		<input type="checkbox"/> DR13534
	100	24	5		<input type="checkbox"/> DR135310
4	20	24	5		<input type="checkbox"/> DR13542
	40	24	5	<input type="checkbox"/> DR12044	<input type="checkbox"/> DR13544
	100	24	5	<input type="checkbox"/> DR120410	<input type="checkbox"/> DR135410
	120	24	6		<input type="checkbox"/> DR135412
5	150	24	6		<input type="checkbox"/> DR135415
	170	24	6		<input type="checkbox"/> DR135417
	200	24	6		<input type="checkbox"/> DR135420
	20	24	5	<input type="checkbox"/> DR12052	<input type="checkbox"/> DR13552
6	40	24	5	<input type="checkbox"/> DR12054	<input type="checkbox"/> DR13554
	60	24	5		<input type="checkbox"/> DR13556
	80	24	5		<input type="checkbox"/> DR13558
	100	24	5	<input type="checkbox"/> DR120510	<input type="checkbox"/> DR135510
7	120	24	6		<input type="checkbox"/> DR135512
	150	24	6		<input type="checkbox"/> DR135515
	170	24	6		<input type="checkbox"/> DR135517
	200	24	6		<input type="checkbox"/> DR135520
8	20	24	6	<input type="checkbox"/> DR12062	<input type="checkbox"/> DR13562
	40	24	6	<input type="checkbox"/> DR12064	<input type="checkbox"/> DR13564
	60	24	6		<input type="checkbox"/> DR13566
	80	24	6		<input type="checkbox"/> DR13568
	100	22	6	<input type="checkbox"/> DR120610	<input type="checkbox"/> DR135610
	120	22	6		<input type="checkbox"/> DR135612
9	150	22	6		<input type="checkbox"/> DR135615
	170	22	6		<input type="checkbox"/> DR135617
	200	22	6		<input type="checkbox"/> DR135620

CONTINUED >

ORDERING INFORMATION

Dorado™ .035" PTA Dilatation Catheter Standard 120 cm & 135 cm Catheter Lengths					
Balloon Dia. (mm)	Balloon Length (mm)	RBP (atm)	Sheath Size (F)	120 cm Product Codes	135 cm Product Codes
7	20	22	6		<input type="checkbox"/> DR13572
	40	22	6	<input type="checkbox"/> DR12074	<input type="checkbox"/> DR13574
	100	22	6	<input type="checkbox"/> DR120710	<input type="checkbox"/> DR135710
	120	22	6		<input type="checkbox"/> DR135712
	150	22	6		<input type="checkbox"/> DR135715
	170	22	6		<input type="checkbox"/> DR135717
	200	22	6		<input type="checkbox"/> DR135720
8	20	22	6		<input type="checkbox"/> DR13582
	40	22	6	<input type="checkbox"/> DR12084	<input type="checkbox"/> DR13584
	100	20	6		<input type="checkbox"/> DR135810
9	40	20	6		<input type="checkbox"/> DR13594
10	20	20	6		<input type="checkbox"/> DR135102
	40	20	6	<input type="checkbox"/> DR120104	<input type="checkbox"/> DR135104

Lutonix™ .018" Drug Coated Balloon PTA Catheter Drug Coated 100 cm & 130 cm Catheter Lengths					
Balloon Dia. (mm)	Balloon Length (mm)	RBP (atm)	Sheath Size (F)	100 cm Product Codes	130 cm Product Codes
4	40	12	4F	<input type="checkbox"/> 9111410400040	<input type="checkbox"/> 9111413400040
	60	12	4F	<input type="checkbox"/> 9111410400060	<input type="checkbox"/> 9111413400060
	80	12	4F	<input type="checkbox"/> 9111410400080	<input type="checkbox"/> 9111413400080
	100	12	4F	<input type="checkbox"/> 9111410400100	<input type="checkbox"/> 9111413400100
	120	12	4F	<input type="checkbox"/> 9111410400120	<input type="checkbox"/> 9111413400120
	150	12	4F	<input type="checkbox"/> 9111410400150	<input type="checkbox"/> 9111413400150
	220	12	4F	<input type="checkbox"/> 9111410400220	<input type="checkbox"/> 9111413400220
5	40	12	5F	<input type="checkbox"/> 9111410500040	<input type="checkbox"/> 9111413500040
	60	12	5F	<input type="checkbox"/> 9111410500060	<input type="checkbox"/> 9111413500060
	80	12	5F	<input type="checkbox"/> 9111410500080	<input type="checkbox"/> 9111413500080
	100	12	5F	<input type="checkbox"/> 9111410500100	<input type="checkbox"/> 9111413500100
	120	12	5F	<input type="checkbox"/> 9111410500120	<input type="checkbox"/> 9111413500120
	150	12	5F	<input type="checkbox"/> 9111410500150	<input type="checkbox"/> 9111413500150
6	40	12	5F	<input type="checkbox"/> 9111410600040	<input type="checkbox"/> 9111413600040
	60	12	5F	<input type="checkbox"/> 9111410600060	<input type="checkbox"/> 9111413600060
	80	12	5F	<input type="checkbox"/> 9111410600080	<input type="checkbox"/> 9111413600080
	100	12	5F	<input type="checkbox"/> 9111410600100	<input type="checkbox"/> 9111413600100
7	40	10	5F	<input type="checkbox"/> 9111410700040	<input type="checkbox"/> 9111413700040
	60	10	5F	<input type="checkbox"/> 9111410700060	<input type="checkbox"/> 9111413700060
	80	10	5F		<input type="checkbox"/> 9111413700080
	100	10	5F		<input type="checkbox"/> 9111413700100

Presto™ Inflation Device		
Description	Quantity	Product Code
Presto™ Inflation Device	5/Box	<input type="checkbox"/> ID4030

Lutonix™ .035" Drug Coated Balloon PTA Catheter Drug Coated 75 cm, 100 cm & 130 cm Catheter Lengths						
Balloon Dia. (mm)	Balloon Length (mm)	RBP (atm)	Sheath Size (F)	75 cm Product Codes	100 cm Product Codes	130 cm Product Codes
4	40	12	5		<input type="checkbox"/> 9090410400040	<input type="checkbox"/> 9090413400040
	60	12	5		<input type="checkbox"/> 9090410400060	<input type="checkbox"/> 9090413400060
	80	12	5		<input type="checkbox"/> 9090410400080	<input type="checkbox"/> 9090413400080
	100	12	5		<input type="checkbox"/> 9090410400100	<input type="checkbox"/> 9090413400100
	120	12	5		<input type="checkbox"/> 9090410400120	<input type="checkbox"/> 9090413400120
	150	12	5		<input type="checkbox"/> 9090410400150	<input type="checkbox"/> 9090413400150
5	40	12	5	<input type="checkbox"/> 9090475500040	<input type="checkbox"/> 9090410500040	<input type="checkbox"/> 9090413500040
	60	12	5	<input type="checkbox"/> 9090475500060	<input type="checkbox"/> 9090410500060	<input type="checkbox"/> 9090413500060
	80	12	5	<input type="checkbox"/> 9090475500080	<input type="checkbox"/> 9090410500080	<input type="checkbox"/> 9090413500080
	100	12	5		<input type="checkbox"/> 9090410500100	<input type="checkbox"/> 9090413500100
	120	12	5		<input type="checkbox"/> 9090410500120	<input type="checkbox"/> 9090413500120
	150	12	5		<input type="checkbox"/> 9090410500150	<input type="checkbox"/> 9090413500150
6	40	12	5	<input type="checkbox"/> 9090475600040	<input type="checkbox"/> 9090410600040	<input type="checkbox"/> 9090413600040
	60	12	5	<input type="checkbox"/> 9090475600060	<input type="checkbox"/> 9090410600060	<input type="checkbox"/> 9090413600060
	80	12	5	<input type="checkbox"/> 9090475600080	<input type="checkbox"/> 9090410600080	<input type="checkbox"/> 9090413600080
	100	12	5		<input type="checkbox"/> 9090410600100	<input type="checkbox"/> 9090413600100
	120	12	5		<input type="checkbox"/> 9090410600120	<input type="checkbox"/> 9090413600120
	150	12	5		<input type="checkbox"/> 9090410600150	<input type="checkbox"/> 9090413600150
7	40	12	5	<input type="checkbox"/> 9090475700040		
	60	12	5	<input type="checkbox"/> 9090475700060		
8	40	12	7	<input type="checkbox"/> 9090475800040		
	60	12	7	<input type="checkbox"/> 9090475800060		
9	40	11	7	<input type="checkbox"/> 9090475900040		
	60	11	7	<input type="checkbox"/> 9090475900060		
10	40	11	8	<input type="checkbox"/> 9090475100040		
	60	11	8	<input type="checkbox"/> 9090475100060		
12	40	10	10	<input type="checkbox"/> 9090410400040		

Lutonix™ .014" Drug Coated PTA Catheter 150 cm Catheter Lengths				
Balloon Dia. (mm)	Balloon Length (mm)	RBP (atm)	Sheath Size (F)	150 cm Product Codes
2	20	15	4	<input type="checkbox"/> 9020515 200040
	80	15	4	<input type="checkbox"/> 9020515 200080
	120	15	4	<input type="checkbox"/> 9020515 200120
2.5	20	15	4	<input type="checkbox"/> 9020515 200150
	80	15	4	<input type="checkbox"/> 9020515 250040
	120	15	4	<input type="checkbox"/> 9020515 250080
3	20	15	4	<input type="checkbox"/> 9020515 250120
	80	15	4	<input type="checkbox"/> 9020515 250150
	150	15	4	<input type="checkbox"/> 9020515 300040
3.5	20	15	4	<input type="checkbox"/> 9020515 300080
	80	15	4	<input type="checkbox"/> 9020515 300120
	150	15	4	<input type="checkbox"/> 9020515 200150
4	20	15	4	<input type="checkbox"/> 9020515 350040
	80	15	4	<input type="checkbox"/> 9020515 350080
	120	15	4	<input type="checkbox"/> 9020515 350120
4	20	15	4	<input type="checkbox"/> 9020515 350150
	80	15	4	<input type="checkbox"/> 9020515 400040
	120	15	4	<input type="checkbox"/> 9020515 400080
4	20	15	4	<input type="checkbox"/> 9020515 400120
	80	15	4	<input type="checkbox"/> 9020515 400150
	150	15	4	<input type="checkbox"/> 9020515 400150

ORDERING INFORMATION

UltraScore™ .014" Focused Force PTA Balloon 150 cm Catheter Lengths				
Balloon Dia. (mm)	Balloon Length (mm)	RBP (atm)	Sheath Size (F)	150 cm Product Codes
2	20	14	4	<input type="checkbox"/> US1415022
	40	14	4	<input type="checkbox"/> US1415024
	80	14	4	<input type="checkbox"/> US1415028
	100	14	4	<input type="checkbox"/> US14150210
	120	14	4	<input type="checkbox"/> US14150212
	150	14	4	<input type="checkbox"/> US14150215
	200	14	4	<input type="checkbox"/> US14150220
2.5	300	14	4	<input type="checkbox"/> US14150230
	20	14	4	<input type="checkbox"/> US141502H2
	40	14	4	<input type="checkbox"/> US141502H4
	80	14	4	<input type="checkbox"/> US141502H8
	100	14	4	<input type="checkbox"/> US141502H10
	120	14	4	<input type="checkbox"/> US141502H12
	150	14	4	<input type="checkbox"/> US141502H15
3	200	14	4	<input type="checkbox"/> US141502H20
	300	14	4	<input type="checkbox"/> US141502H30
	20	14	4	<input type="checkbox"/> US1415032
	40	14	4	<input type="checkbox"/> US1415034
	80	14	4	<input type="checkbox"/> US1415038
	100	14	4	<input type="checkbox"/> US14150310
	120	14	4	<input type="checkbox"/> US14150312
3.5	150	14	4	<input type="checkbox"/> US14150315
	200	14	4	<input type="checkbox"/> US14150320
	300	14	4	<input type="checkbox"/> US14150330
	20	14	4	<input type="checkbox"/> US141503H2
	40	14	4	<input type="checkbox"/> US141503H4
	80	14	4	<input type="checkbox"/> US141503H8
	100	14	4	<input type="checkbox"/> US141503H10
4	120	14	4	<input type="checkbox"/> US141503H12
	150	14	4	<input type="checkbox"/> US141503H15
	200	14	4	<input type="checkbox"/> US141503H20
	300	14	4	<input type="checkbox"/> US141503H30
	20	14	5	<input type="checkbox"/> US1415042
	40	14	5	<input type="checkbox"/> US1415044
	80	14	5	<input type="checkbox"/> US1415048
5	100	14	5	<input type="checkbox"/> US14150410
	120	14	5	<input type="checkbox"/> US14150412
	150	14	5	<input type="checkbox"/> US14150415
	200	14	5	<input type="checkbox"/> US14150420
	300	14	5	<input type="checkbox"/> US14150430
	20	12	5	<input type="checkbox"/> US1415052
	40	12	5	<input type="checkbox"/> US1415054
5	80	12	5	<input type="checkbox"/> US1415058
	100	12	5	<input type="checkbox"/> US14150510
	120	12	5	<input type="checkbox"/> US14150512
	150	12	5	<input type="checkbox"/> US14150515
	200	12	5	<input type="checkbox"/> US14150520
	300	12	5	<input type="checkbox"/> US14150530

CONTINUED >

UltraScore™ .014" Focused Force PTA Balloon 150 cm Catheter Lengths				
Balloon Dia. (mm)	Balloon Length (mm)	RBP (atm)	Sheath Size (F)	150 cm Product Codes
6	20	12	5	<input type="checkbox"/> US1415062
	40	12	5	<input type="checkbox"/> US1415064
	80	12	5	<input type="checkbox"/> US1415068
	100	12	5	<input type="checkbox"/> US14150610
	120	12	5	<input type="checkbox"/> US14150612
	150	12	5	<input type="checkbox"/> US14150615
7	200	12	5	<input type="checkbox"/> US14150620
	300	12	5	<input type="checkbox"/> US14150630
	20	10	5	<input type="checkbox"/> US1415072
	40	10	5	<input type="checkbox"/> US1415074
	80	10	5	<input type="checkbox"/> US1415078
	100	10	5	<input type="checkbox"/> US14150710
7	120	10	5	<input type="checkbox"/> US14150712
	150	10	5	<input type="checkbox"/> US14150715
	200	10	5	<input type="checkbox"/> US14150720
	300	10	5	<input type="checkbox"/> US14150730

ORDERING INFORMATION

UltraScore™ .035" Focused Force PTA Balloon 130 cm Catheter Lengths				
Balloon Dia. (mm)	Balloon Length (mm)	RBP (atm)	Sheath Size (F)	130 cm Product Codes
4	20	14	5	<input type="checkbox"/> US3513042
	40	14	5	<input type="checkbox"/> US3513044
	80	14	5	<input type="checkbox"/> US3513048
	100	14	5	<input type="checkbox"/> US35130410
	120	14	5	<input type="checkbox"/> US35130412
	150	14	5	<input type="checkbox"/> US35130415
	200	14	5	<input type="checkbox"/> US35130420
	300	14	5	<input type="checkbox"/> US35130430
5	20	14	5	<input type="checkbox"/> US3513052
	40	14	5	<input type="checkbox"/> US3513054
	80	14	5	<input type="checkbox"/> US3513058
	100	14	5	<input type="checkbox"/> US35130510
	120	14	5	<input type="checkbox"/> US35130512
	150	14	5	<input type="checkbox"/> US35130515
	200	14	6	<input type="checkbox"/> US35130520
	300	14	6	<input type="checkbox"/> US35130530
6	20	14	5	<input type="checkbox"/> US3513062
	40	14	5	<input type="checkbox"/> US3513064
	80	14	6	<input type="checkbox"/> US3513068
	100	14	6	<input type="checkbox"/> US35130610
	120	14	6	<input type="checkbox"/> US35130612
	150	14	6	<input type="checkbox"/> US35130615
	200	14	6	<input type="checkbox"/> US35130620
	300	14	6	<input type="checkbox"/> US35130630
7	20	14	6	<input type="checkbox"/> US3513072
	40	14	6	<input type="checkbox"/> US3513074
	80	14	6	<input type="checkbox"/> US3513078
	100	14	6	<input type="checkbox"/> US35130710
	120	14	6	<input type="checkbox"/> US35130712
	150	14	6	<input type="checkbox"/> US35130715
8	20	14	6	<input type="checkbox"/> US3513082
	40	14	6	<input type="checkbox"/> US3513084
	80	14	6	<input type="checkbox"/> US3513088
	100	14	6	<input type="checkbox"/> US35130810
	120	14	6	<input type="checkbox"/> US35130812
	150	14	6	<input type="checkbox"/> US35130815
200	14	6	<input type="checkbox"/> US35130820	

Ultraverse™ .014" PTA Balloon Dilatation Catheter 150 cm Catheter Lengths				
Balloon Dia. (mm)	Balloon Length (mm)	RBP (atm)	Sheath Size (F)	150 cm Product Codes
1.5	20	16	4	<input type="checkbox"/> U41501H2
	40	16	4	<input type="checkbox"/> U41501H4
	60	16	5	<input type="checkbox"/> U41501H6
	80	16	5	<input type="checkbox"/> U41501H8
	100	16	5	<input type="checkbox"/> U41501H10
	120	16	4	<input type="checkbox"/> U41501H12
	150	16	5	<input type="checkbox"/> U41501H15
	2	20	16	4
40		16	4	<input type="checkbox"/> U415024
60		16	5	<input type="checkbox"/> U415026
80		15	4	<input type="checkbox"/> U415028
100		15	4	<input type="checkbox"/> U4150210
120		15	4	<input type="checkbox"/> U4150212
150		15	4	<input type="checkbox"/> U4150215
220		15	4	<input type="checkbox"/> U4150222
300	15	4	<input type="checkbox"/> U4150230	
2.5	20	16	4	<input type="checkbox"/> U41502H2
	40	16	4	<input type="checkbox"/> U41502H4
	60	16	5	<input type="checkbox"/> U41502H6
	80	15	4	<input type="checkbox"/> U41502H8
	100	15	4	<input type="checkbox"/> U41502H10
	120	15	4	<input type="checkbox"/> U41502H12
	150	15	4	<input type="checkbox"/> U41502H15
	220	15	4	<input type="checkbox"/> U41502H22
300	15	4	<input type="checkbox"/> U41502H30	
3	20	16	4	<input type="checkbox"/> U415032
	40	16	4	<input type="checkbox"/> U415034
	60	16	5	<input type="checkbox"/> U415036
	80	15	4	<input type="checkbox"/> U415038
	100	15	4	<input type="checkbox"/> U4150310
	120	15	4	<input type="checkbox"/> U4150312
	150	15	4	<input type="checkbox"/> U4150315
	220	15	4	<input type="checkbox"/> U4150322
300	15	4	<input type="checkbox"/> U4150330	
3.5	20	16	4	<input type="checkbox"/> U41503H2
	40	16	4	<input type="checkbox"/> U41503H4
	60	16	5	<input type="checkbox"/> U41503H6
	80	15	4	<input type="checkbox"/> U41503H8
	100	15	4	<input type="checkbox"/> U41503H10
	120	15	4	<input type="checkbox"/> U41503H12
	150	15	4	<input type="checkbox"/> U41503H15
	220	15	4	<input type="checkbox"/> U41503H22
300	15	4	<input type="checkbox"/> U41503H30	
4	20	16	4	<input type="checkbox"/> U415042
	40	16	4	<input type="checkbox"/> U415044
	60	16	5	<input type="checkbox"/> U415046

CONTINUED >

ORDERING INFORMATION

Ultraverse™ .014" PTA Balloon Dilatation Catheter 150 cm Catheter Lengths					
Balloon Dia. (mm)	Balloon Length (mm)	RBP (atm)	Sheath Size (F)	150 cm Product Codes	
4	80	15	4	<input type="checkbox"/> U415048	
	100	15	4	<input type="checkbox"/> U4150410	
	120	15	4	<input type="checkbox"/> U4150412	
	150	15	5	<input type="checkbox"/> U4150415	
	220	15	5	<input type="checkbox"/> U4150422	
	300	15	5	<input type="checkbox"/> U4150430	
	5	20	14	5	<input type="checkbox"/> U415052
		40	14	5	<input type="checkbox"/> U415054
60		14	5	<input type="checkbox"/> U415056	
80		13	5	<input type="checkbox"/> U415058	
100		13	5	<input type="checkbox"/> U4150510	
120		13	5	<input type="checkbox"/> U4150512	
150		13	5	<input type="checkbox"/> U4150515	
220		13	5	<input type="checkbox"/> U4150522	
300	13	5	<input type="checkbox"/> U4150530		

Ultraverse™ .018" PTA Balloon Dilatation Catheter 75 cm, 130 cm, & 200 cm Catheter Lengths						
Dia. (mm)	Length (mm)	RBP (atm)	Sheath (F)	75 cm Product Codes	130 cm Product Codes	200 cm Product Codes
2	20	16	4	<input type="checkbox"/> U87522	<input type="checkbox"/> U813022	
	40	16	4	<input type="checkbox"/> U87524	<input type="checkbox"/> U813024	
	60	16	4		<input type="checkbox"/> U813026	
	80	15	4		<input type="checkbox"/> U813028	
	100	15	4	<input type="checkbox"/> U875210	<input type="checkbox"/> U8130210	
	120	15	4	<input type="checkbox"/> U875212	<input type="checkbox"/> U8130212	
	150	15	4	<input type="checkbox"/> U875215	<input type="checkbox"/> U8130215	
	200	15	4		<input type="checkbox"/> U8130220	
	220	15	4	<input type="checkbox"/> U875222	<input type="checkbox"/> U8130222	
	300	15	4	<input type="checkbox"/> U875230	<input type="checkbox"/> U8130230	
2.5	20	16	4	<input type="checkbox"/> U8752H2	<input type="checkbox"/> U81302H2	
	40	16	4	<input type="checkbox"/> U8752H4	<input type="checkbox"/> U81302H4	
	60	16	4		<input type="checkbox"/> U81302H6	
	80	15	4		<input type="checkbox"/> U81302H8	
	100	15	4	<input type="checkbox"/> U8752H10	<input type="checkbox"/> U81302H10	
	120	15	4	<input type="checkbox"/> U8752H12	<input type="checkbox"/> U81302H12	
	150	15	4	<input type="checkbox"/> U8752H15	<input type="checkbox"/> U81302H15	
	200	15	4		<input type="checkbox"/> U81302H20	
	220	15	4	<input type="checkbox"/> U8752H22	<input type="checkbox"/> U81302H22	
	300	15	4	<input type="checkbox"/> U8752H30	<input type="checkbox"/> U81302H30	
3	20	16	4	<input type="checkbox"/> U87532	<input type="checkbox"/> U813032	
	40	16	4	<input type="checkbox"/> U87534	<input type="checkbox"/> U813034	
	60	16	4		<input type="checkbox"/> U813036	
	80	15	4		<input type="checkbox"/> U813038	
	100	15	4	<input type="checkbox"/> U875310	<input type="checkbox"/> U8130310	
	120	15	4	<input type="checkbox"/> U875312	<input type="checkbox"/> U8130312	
3	150	15	4	<input type="checkbox"/> U875315	<input type="checkbox"/> U8130315	

CONTINUED >

Ultraverse™ .018" PTA Balloon Dilatation Catheter 75 cm, 130 cm, & 200 cm Catheter Lengths						
Dia. (mm)	Length (mm)	RBP (atm)	Sheath (F)	75 cm Product Codes	130 cm Product Codes	200 cm Product Codes
3	200	15	4		<input type="checkbox"/> U8130320	
	220	15	4	<input type="checkbox"/> U875322	<input type="checkbox"/> U8130322	
	300	15	4	<input type="checkbox"/> U875330	<input type="checkbox"/> U8130330	
	20	16	4		<input type="checkbox"/> U81303H2	
3.5	40	16	4		<input type="checkbox"/> U81303H4	
	60	16	4		<input type="checkbox"/> U81303H6	
	80	15	4		<input type="checkbox"/> U81303H8	
	100	15	4		<input type="checkbox"/> U81303H10	
	120	15	4		<input type="checkbox"/> U81303H12	
	150	15	4		<input type="checkbox"/> U81303H15	
	200	15	4		<input type="checkbox"/> U81303H20	
	220	15	4		<input type="checkbox"/> U81303H22	
300	15	4		<input type="checkbox"/> U81303H30		
4	20	16	4	<input type="checkbox"/> U87542	<input type="checkbox"/> U813042	
	40	16	4	<input type="checkbox"/> U87544	<input type="checkbox"/> U813044	<input type="checkbox"/> U820044
	60	15	4	<input type="checkbox"/> U87546	<input type="checkbox"/> U813046	<input type="checkbox"/> U820046
	80	15	4		<input type="checkbox"/> U813048	<input type="checkbox"/> U820048
	100	15	4	<input type="checkbox"/> U875410	<input type="checkbox"/> U8130410	<input type="checkbox"/> U8200410
	120	15	4	<input type="checkbox"/> U875412	<input type="checkbox"/> U8130412	<input type="checkbox"/> U8200412
	150	15	4	<input type="checkbox"/> U875415	<input type="checkbox"/> U8130415	<input type="checkbox"/> U8200415
	200	15	4		<input type="checkbox"/> U8130420	<input type="checkbox"/> U8200420
	220	15	5	<input type="checkbox"/> U875422	<input type="checkbox"/> U8130422	<input type="checkbox"/> U8200422
	300	15	5	<input type="checkbox"/> U875430	<input type="checkbox"/> U8130430	<input type="checkbox"/> U8200430
5	20	14	5	<input type="checkbox"/> U87552	<input type="checkbox"/> U813052	
	40	14	5	<input type="checkbox"/> U87554	<input type="checkbox"/> U813054	<input type="checkbox"/> U820054
	60	13	5	<input type="checkbox"/> U87556	<input type="checkbox"/> U813056	<input type="checkbox"/> U820056
	80	13	5		<input type="checkbox"/> U813058	<input type="checkbox"/> U820058
	100	13	5	<input type="checkbox"/> U875510	<input type="checkbox"/> U8130510	<input type="checkbox"/> U8200510
	120	13	5	<input type="checkbox"/> U875512	<input type="checkbox"/> U8130512	<input type="checkbox"/> U8200512
	150	13	5	<input type="checkbox"/> U875515	<input type="checkbox"/> U8130515	<input type="checkbox"/> U8200515
	200	13	5		<input type="checkbox"/> U8130520	<input type="checkbox"/> U8200520
6	220	13	5	<input type="checkbox"/> U875522	<input type="checkbox"/> U8130522	<input type="checkbox"/> U8200522
	300	13	5	<input type="checkbox"/> U875530	<input type="checkbox"/> U8130530	<input type="checkbox"/> U8200530
	20	14	5	<input type="checkbox"/> U87562	<input type="checkbox"/> U813062	
	40	14	5	<input type="checkbox"/> U87564	<input type="checkbox"/> U813064	<input type="checkbox"/> U820064
	60	12	5	<input type="checkbox"/> U87566	<input type="checkbox"/> U813066	<input type="checkbox"/> U820066
	80	12	5	<input type="checkbox"/> U87568	<input type="checkbox"/> U813068	<input type="checkbox"/> U820068
7	100	12	5	<input type="checkbox"/> U875610	<input type="checkbox"/> U8130610	<input type="checkbox"/> U8200610
	120	12	5	<input type="checkbox"/> U875612	<input type="checkbox"/> U8130612	<input type="checkbox"/> U8200612
	150	12	5	<input type="checkbox"/> U875615	<input type="checkbox"/> U8130615	<input type="checkbox"/> U8200615
	200	12	5	<input type="checkbox"/> U875620	<input type="checkbox"/> U8130620	<input type="checkbox"/> U8200620
	220	12	5	<input type="checkbox"/> U875622	<input type="checkbox"/> U8130622	<input type="checkbox"/> U8200622
	300	12	5	<input type="checkbox"/> U875630	<input type="checkbox"/> U8130630	<input type="checkbox"/> U8200630
8	20	12	5		<input type="checkbox"/> U813072	
	40	12	5	<input type="checkbox"/> U87574	<input type="checkbox"/> U813074	<input type="checkbox"/> U820074
	60	12	5		<input type="checkbox"/> U813076	<input type="checkbox"/> U820076
	80	11	5		<input type="checkbox"/> U813078	<input type="checkbox"/> U820078

CONTINUED >

ORDERING INFORMATION

Ultraverse™ .018" PTA Balloon Dilatation Catheter
75 cm, 130 cm, & 200 cm Catheter Lengths

Dia. (mm)	Length (mm)	RBP (atm)	Sheath (F)	75 cm Product Codes	130 cm Product Codes	200 cm Product Codes
7	100	11	5		<input type="checkbox"/> U8130710	<input type="checkbox"/> U8200710
	120	11	5		<input type="checkbox"/> U8130712	<input type="checkbox"/> U8200712
	150	11	5		<input type="checkbox"/> U8130715	<input type="checkbox"/> U8200715
	200	11	5		<input type="checkbox"/> U8130720	<input type="checkbox"/> U8200720
	220	11	5		<input type="checkbox"/> U8130722	<input type="checkbox"/> U8200722
	300	11	5		<input type="checkbox"/> U8130730	<input type="checkbox"/> U8200730
8	40	12	6	<input type="checkbox"/> U87584		<input type="checkbox"/> U820084
	60	12	6			<input type="checkbox"/> U820086
9	40	11	6	<input type="checkbox"/> U87594		<input type="checkbox"/> U820094
	60	11	6			<input type="checkbox"/> U820096

Ultraverse™ .035" PTA Dilatation Catheter
Standard 75 cm & 130 cm Catheter Lengths

Balloon Dia. (mm)	Balloon Length (mm)	RBP (atm)	Sheath Size (F)	75 cm Product Codes	130 cm Product Codes	
6	20	15	5	<input type="checkbox"/> U357562	<input type="checkbox"/> U3513062	
	40	15	5	<input type="checkbox"/> U357564	<input type="checkbox"/> U3513064	
	60	15	5	<input type="checkbox"/> U357566	<input type="checkbox"/> U3513066	
	80	15	5	<input type="checkbox"/> U357568	<input type="checkbox"/> U3513068	
	100	14	5	<input type="checkbox"/> U3575610	<input type="checkbox"/> U35130610	
	120	14	5	<input type="checkbox"/> U3575612	<input type="checkbox"/> U35130612	
	150	14	5	<input type="checkbox"/> U3575615	<input type="checkbox"/> U35130615	
	200	14	5	<input type="checkbox"/> U3575620	<input type="checkbox"/> U35130620	
	250	14	5	<input type="checkbox"/> U3575625	<input type="checkbox"/> U35130625	
	300	14	5	<input type="checkbox"/> U3575630	<input type="checkbox"/> U35130630	
	7	20	14	5	<input type="checkbox"/> U357572	<input type="checkbox"/> U3513072
		40	14	5	<input type="checkbox"/> U357574	<input type="checkbox"/> U3513074
60		14	5	<input type="checkbox"/> U357576	<input type="checkbox"/> U3513076	
80		14	5	<input type="checkbox"/> U357578	<input type="checkbox"/> U3513078	
100		11	5	<input type="checkbox"/> U3575710	<input type="checkbox"/> U35130710	
120		11	5	<input type="checkbox"/> U3575712	<input type="checkbox"/> U35130712	
8	150	11	5	<input type="checkbox"/> U3575715	<input type="checkbox"/> U35130715	
	200	11	5	<input type="checkbox"/> U3575720	<input type="checkbox"/> U35130720	
	250	11	6	<input type="checkbox"/> U3575725	<input type="checkbox"/> U35130725	
	20	10	5	<input type="checkbox"/> U357582	<input type="checkbox"/> U3513082	
	40	10	5	<input type="checkbox"/> U357584	<input type="checkbox"/> U3513084	
	60	10	5	<input type="checkbox"/> U357586	<input type="checkbox"/> U3513086	
9	80	10	5	<input type="checkbox"/> U357588	<input type="checkbox"/> U3513088	
	100	13	6	<input type="checkbox"/> U3575810	<input type="checkbox"/> U35130810	
	120	13	6	<input type="checkbox"/> U3575812	<input type="checkbox"/> U35130812	
	150	13	6	<input type="checkbox"/> U3575815	<input type="checkbox"/> U35130815	
10	200	13	6	<input type="checkbox"/> U3575820	<input type="checkbox"/> U35130820	
	20	12	6	<input type="checkbox"/> U357592	<input type="checkbox"/> U3513092	
	40	12	6	<input type="checkbox"/> U357594	<input type="checkbox"/> U3513094	
	60	11	6	<input type="checkbox"/> U357596	<input type="checkbox"/> U3513096	
11	80	11	6	<input type="checkbox"/> U357598	<input type="checkbox"/> U3513098	
	100	11	6	<input type="checkbox"/> U3575910	<input type="checkbox"/> U35130910	
	20	11	6	<input type="checkbox"/> U3575102	<input type="checkbox"/> U35130102	
	40	11	6	<input type="checkbox"/> U3575104	<input type="checkbox"/> U35130104	
12	60	10	6	<input type="checkbox"/> U3575106	<input type="checkbox"/> U35130106	
	80	10	6	<input type="checkbox"/> U3575108	<input type="checkbox"/> U35130108	
	100	10	6	<input type="checkbox"/> U35751010	<input type="checkbox"/> U351301010	
	20	11	7	<input type="checkbox"/> U3575122	<input type="checkbox"/> U35130122	
13	40	11	7	<input type="checkbox"/> U3575124	<input type="checkbox"/> U35130124	
	60	9	7	<input type="checkbox"/> U3575126	<input type="checkbox"/> U35130126	
	80	9	7	<input type="checkbox"/> U3575128	<input type="checkbox"/> U35130128	
	100	9	7	<input type="checkbox"/> U35751210	<input type="checkbox"/> U351301210	

Ultraverse™ .035" PTA Dilatation Catheter
Standard 75 cm & 130 cm Catheter Lengths

Balloon Dia. (mm)	Balloon Length (mm)	RBP (atm)	Sheath Size (F)	75 cm Product Codes	130 cm Product Codes
3	20	21	5	<input type="checkbox"/> U357532	<input type="checkbox"/> U3513032
	40	21	5	<input type="checkbox"/> U357534	<input type="checkbox"/> U3513034
	60	21	5	<input type="checkbox"/> U357536	<input type="checkbox"/> U3513036
	80	21	5	<input type="checkbox"/> U357538	<input type="checkbox"/> U3513038
	100	19	5	<input type="checkbox"/> U3575310	<input type="checkbox"/> U35130310
	120	19	5	<input type="checkbox"/> U3575312	<input type="checkbox"/> U35130312
	150	19	5	<input type="checkbox"/> U3575315	<input type="checkbox"/> U35130315
	200	19	5	<input type="checkbox"/> U3575320	<input type="checkbox"/> U35130320
4	250	19	5	<input type="checkbox"/> U3575325	<input type="checkbox"/> U35130325
	300	19	5	<input type="checkbox"/> U3575330	<input type="checkbox"/> U35130330
	20	20	5	<input type="checkbox"/> U357542	<input type="checkbox"/> U3513042
	40	20	5	<input type="checkbox"/> U357544	<input type="checkbox"/> U3513044
5	60	20	5	<input type="checkbox"/> U357546	<input type="checkbox"/> U3513046
	80	20	5	<input type="checkbox"/> U357548	<input type="checkbox"/> U3513048
	100	19	5	<input type="checkbox"/> U3575410	<input type="checkbox"/> U35130410
	120	19	5	<input type="checkbox"/> U3575412	<input type="checkbox"/> U35130412
	150	19	5	<input type="checkbox"/> U3575415	<input type="checkbox"/> U35130415
	200	19	5	<input type="checkbox"/> U3575420	<input type="checkbox"/> U35130420
	250	19	5	<input type="checkbox"/> U3575425	<input type="checkbox"/> U35130425
	300	19	5	<input type="checkbox"/> U3575430	<input type="checkbox"/> U35130430
6	20	17	5	<input type="checkbox"/> U357552	<input type="checkbox"/> U3513052
	40	17	5	<input type="checkbox"/> U357554	<input type="checkbox"/> U3513054
	60	17	5	<input type="checkbox"/> U357556	<input type="checkbox"/> U3513056
	80	17	5	<input type="checkbox"/> U357558	<input type="checkbox"/> U3513058
	100	16	5	<input type="checkbox"/> U3575510	<input type="checkbox"/> U35130510
	120	16	5	<input type="checkbox"/> U3575512	<input type="checkbox"/> U35130512
	150	16	5	<input type="checkbox"/> U3575515	<input type="checkbox"/> U35130515
	200	16	5	<input type="checkbox"/> U3575520	<input type="checkbox"/> U35130520
7	250	16	5	<input type="checkbox"/> U3575525	<input type="checkbox"/> U35130525
	300	16	5	<input type="checkbox"/> U3575530	<input type="checkbox"/> U35130530

CONTINUED >

ORDERING INFORMATION

Ultraverse™ RX PTA Dilatation Catheter
150 cm & 200 cm Catheter Lengths

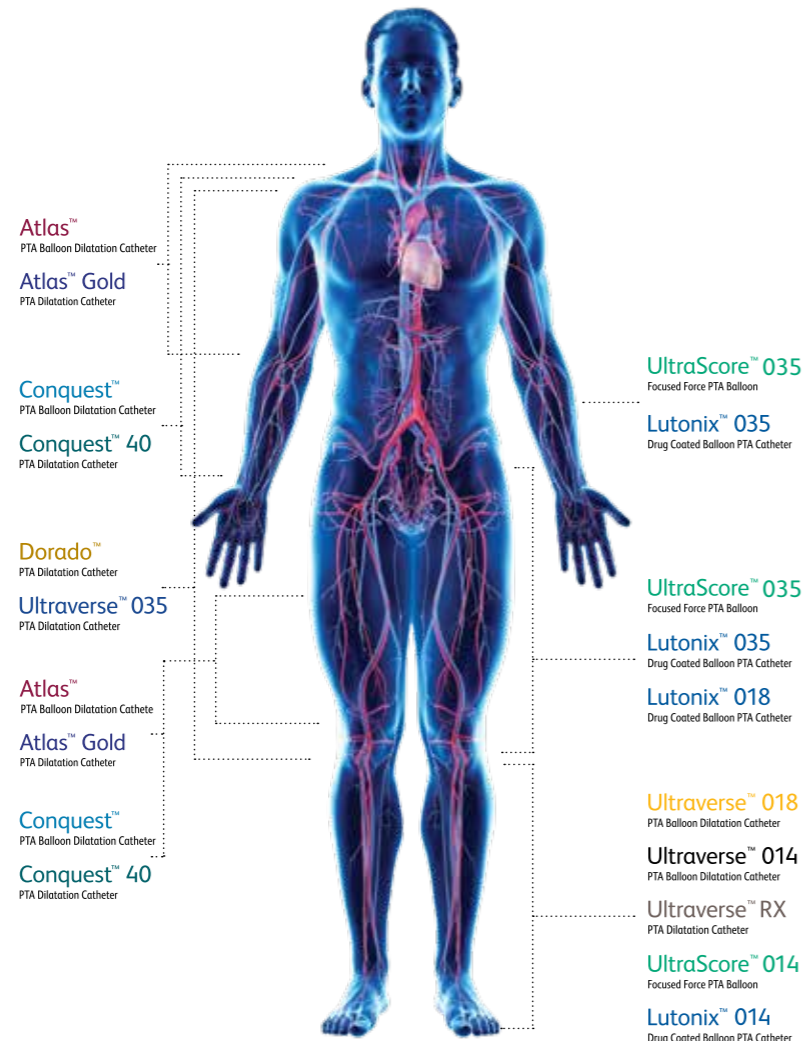
Balloon Dia. (mm)	Balloon Length (mm)	RBP (ATM)	Sheath Size (F)	150 cm Product Codes	200 cm Product Codes
1.25	15	16	4F	<input type="checkbox"/> U41501Q1HRX	<input type="checkbox"/> U42001Q1HRX
	20	16	4F	<input type="checkbox"/> U41501Q2RX	<input type="checkbox"/> U42001Q2RX
	40	16	4F	<input type="checkbox"/> U41501Q4RX	<input type="checkbox"/> U42001Q4RX
1.5	15	16	4F	<input type="checkbox"/> U41501H1HRX	<input type="checkbox"/> U42001H1HRX
	20	16	4F	<input type="checkbox"/> U41501H2RX	<input type="checkbox"/> U42001H2RX
	40	16	4F	<input type="checkbox"/> U41501H4RX	<input type="checkbox"/> U42001H4RX
	80	16	4F	<input type="checkbox"/> U41501H8RX	<input type="checkbox"/> U42001H8RX
2	120	16	4F	<input type="checkbox"/> U41501H12RX	<input type="checkbox"/> U42001H12RX
	15	16	4F	<input type="checkbox"/> U415021HRX	<input type="checkbox"/> U420021HRX
	20	16	4F	<input type="checkbox"/> U415022RX	<input type="checkbox"/> U420022RX
	40	16	4F	<input type="checkbox"/> U415024RX	<input type="checkbox"/> U420024RX
	60	16	4F	<input type="checkbox"/> U415026RX	<input type="checkbox"/> U420026RX
	80	15	4F	<input type="checkbox"/> U415028RX	<input type="checkbox"/> U420028RX
2.5	100	15	4F	<input type="checkbox"/> U4150210RX	<input type="checkbox"/> U4200210RX
	120	15	4F	<input type="checkbox"/> U4150212RX	<input type="checkbox"/> U4200212RX
	150	15	4F	<input type="checkbox"/> U4150215RX	<input type="checkbox"/> U4200215RX
	200	15	4F	<input type="checkbox"/> U4150220RX	<input type="checkbox"/> U4200220RX
	250	15	4F	<input type="checkbox"/> U4150225RX	<input type="checkbox"/> U4200225RX
	300	15	4F	<input type="checkbox"/> U4150230RX	<input type="checkbox"/> U4200230RX
3	15	16	4F	<input type="checkbox"/> U41502H1HRX	<input type="checkbox"/> U42002H1HRX
	20	16	4F	<input type="checkbox"/> U41502H2RX	<input type="checkbox"/> U42002H2RX
	40	16	4F	<input type="checkbox"/> U41502H4RX	<input type="checkbox"/> U42002H4RX
	60	16	4F	<input type="checkbox"/> U41502H6RX	<input type="checkbox"/> U42002H6RX
	80	15	4F	<input type="checkbox"/> U41502H8RX	<input type="checkbox"/> U42002H8RX
	100	15	4F	<input type="checkbox"/> U41502H10RX	<input type="checkbox"/> U42002H10RX
	120	15	4F	<input type="checkbox"/> U41502H12RX	<input type="checkbox"/> U42002H12RX
	150	15	4F	<input type="checkbox"/> U41502H15RX	<input type="checkbox"/> U42002H15RX
	200	15	4F	<input type="checkbox"/> U41502H20RX	<input type="checkbox"/> U42002H20RX
	250	15	4F	<input type="checkbox"/> U41502H25RX	<input type="checkbox"/> U42002H25RX
	300	15	4F	<input type="checkbox"/> U41502H30RX	<input type="checkbox"/> U42002H30RX
	4	15	16	4F	<input type="checkbox"/> U415031HRX
20		16	4F	<input type="checkbox"/> U415032RX	<input type="checkbox"/> U420032RX
40		16	4F	<input type="checkbox"/> U415034RX	<input type="checkbox"/> U420034RX
60		16	4F	<input type="checkbox"/> U415036RX	<input type="checkbox"/> U420036RX
80		15	4F	<input type="checkbox"/> U415038RX	<input type="checkbox"/> U420038RX
100		15	4F	<input type="checkbox"/> U4150310RX	<input type="checkbox"/> U4200310RX
120		15	4F	<input type="checkbox"/> U4150312RX	<input type="checkbox"/> U4200312RX
150		15	4F	<input type="checkbox"/> U4150315RX	<input type="checkbox"/> U4200315RX
200		15	4F	<input type="checkbox"/> U4150320RX	<input type="checkbox"/> U4200320RX
250		15	4F	<input type="checkbox"/> U4150325RX	<input type="checkbox"/> U4200325RX
300		15	4F	<input type="checkbox"/> U4150330RX	<input type="checkbox"/> U4200330RX

CONTINUED >

Ultraverse™ RX PTA Dilatation Catheter
150 cm & 200 cm Catheter Lengths

Balloon Dia. (mm)	Balloon Length (mm)	RBP (ATM)	Sheath Size (F)	150 cm Product Codes	200 cm Product Codes
3.5	15	16	4F	<input type="checkbox"/> U41503H1HRX	<input type="checkbox"/> U42003H1HRX
	20	16	4F	<input type="checkbox"/> U41503H2RX	<input type="checkbox"/> U42003H2RX
	40	16	4F	<input type="checkbox"/> U41503H4RX	<input type="checkbox"/> U42003H4RX
	60	16	4F	<input type="checkbox"/> U41503H6RX	<input type="checkbox"/> U42003H6RX
	80	15	4F	<input type="checkbox"/> U41503H8RX	<input type="checkbox"/> U42003H8RX
	100	15	4F	<input type="checkbox"/> U41503H10RX	<input type="checkbox"/> U42003H10RX
4	120	15	4F	<input type="checkbox"/> U41503H12RX	<input type="checkbox"/> U42003H12RX
	150	15	4F	<input type="checkbox"/> U41503H15RX	<input type="checkbox"/> U42003H15RX
	200	15	4F	<input type="checkbox"/> U41503H20RX	<input type="checkbox"/> U42003H20RX
	250	15	4F	<input type="checkbox"/> U41503H25RX	<input type="checkbox"/> U42003H25RX
	300	15	4F	<input type="checkbox"/> U41503H30RX	<input type="checkbox"/> U42003H30RX
	5	15	16	4F	<input type="checkbox"/> U415041HRX
20		16	4F	<input type="checkbox"/> U415042RX	<input type="checkbox"/> U420042RX
40		16	4F	<input type="checkbox"/> U415044RX	<input type="checkbox"/> U420044RX
60		16	4F	<input type="checkbox"/> U415046RX	<input type="checkbox"/> U420046RX
80		15	4F	<input type="checkbox"/> U415048RX	<input type="checkbox"/> U420048RX
100		15	4F	<input type="checkbox"/> U4150410RX	<input type="checkbox"/> U4200410RX
120		15	4F	<input type="checkbox"/> U4150412RX	<input type="checkbox"/> U4200412RX
150		15	5F	<input type="checkbox"/> U4150415RX	<input type="checkbox"/> U4200415RX
200		15	5F	<input type="checkbox"/> U4150420RX	<input type="checkbox"/> U4200420RX
250		15	5F	<input type="checkbox"/> U4150425RX	<input type="checkbox"/> U4200425RX
300		15	5F	<input type="checkbox"/> U4150430RX	<input type="checkbox"/> U4200430RX
6		15	14	5F	<input type="checkbox"/> U415051HRX
	20	14	5F	<input type="checkbox"/> U415052RX	<input type="checkbox"/> U420052RX
	40	14	5F	<input type="checkbox"/> U415054RX	<input type="checkbox"/> U420054RX
	60	14	5F	<input type="checkbox"/> U415056RX	<input type="checkbox"/> U420056RX
	80	13	5F	<input type="checkbox"/> U415058RX	<input type="checkbox"/> U420058RX
	100	13	5F	<input type="checkbox"/> U4150510RX	<input type="checkbox"/> U4200510RX
7	120	13	5F	<input type="checkbox"/> U4150512RX	<input type="checkbox"/> U4200512RX
	150	13	5F	<input type="checkbox"/> U4150515RX	<input type="checkbox"/> U4200515RX
	200	13	5F	<input type="checkbox"/> U4150520RX	<input type="checkbox"/> U4200520RX
	250	13	5F	<input type="checkbox"/> U4150525RX	<input type="checkbox"/> U4200525RX
	300	13	5F	<input type="checkbox"/> U4150530RX	<input type="checkbox"/> U4200530RX
	40	14	5F	<input type="checkbox"/> U415064RX	
8	60	14	5F	<input type="checkbox"/> U415066RX	
	40	12	5F	<input type="checkbox"/> U415074RX	
9	60	12	5F	<input type="checkbox"/> U415076RX	

Product	Diameter (mm)	Length (mm)	RBP (atm)	Sheath (F)	Shaft (cm)	Material	Category
Atlas™ Catheter	12 - 26	20 - 60	up to 18	7 - 12	75, 120	Composite	.035" Large Diameter
Atlas™ Gold Catheter	12 - 26	20 - 60	up to 18	7 - 12	80, 120	Composite	.035" Large Diameter
Conquest™ Catheter	5 - 12	20 - 80	up to 30	6 - 8	50, 75, 120	Composite	.035" High Pressure
Conquest™ 40 Catheter	4 - 12	20 - 100	up to 40	6 - 8	50, 75	Composite	.035" High Pressure
Dorado™ Catheter	3 - 10	20 - 200	up to 24	5 - 6	40, 80, 120, 135	Composite	.035" Standard
Lutonix™ 035 Catheter	4 - 12	40 - 150	12	5	75, 100, 130	Drug Coated	.035" Drug Coated
Lutonix™ 014 Catheter	2 - 4	40 - 150	up to 15	4	150	Drug Coated	.014" Drug Coated
Lutonix™ 018 Catheter	4 - 7	40 - 220	up to 12	4 - 5	100, 130	Drug Coated	.018" Drug Coated
UltraScore™ 014 Catheter	2 - 7	20 - 300	up to 14	4 - 5	150	Nylon	.014" Specialty
UltraScore™ 035 Catheter	4 - 8	20 - 300	up to 14	5 - 6	130	Nylon	.035" Specialty
Ultraverse™ 014 Catheter	1.5 - 5	20 - 300	up to 16	4 - 5	150	Nylon	.014" Small Vessel
Ultraverse™ 018 Catheter	2 - 9	20 - 300	up to 16	4 - 6	75, 130, 150	Nylon	.018" Small Vessel
Ultraverse™ 035 Catheter	3 - 12	20 - 300	up to 21	5 - 7	75, 130	Nylon	.035" Standard
Ultraverse™ RX Catheter	1.25 - 7	15 - 300	up to 16	4 - 5	150, 200	Nylon	.014" Small Vessel



AV (Arterio-Venous): Products listed with AV indication are for the treatment of obstructive lesions of native or synthetic arteriovenous dialysis fistulae.

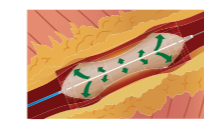
Nominal (Operating) Pressure: The pressure at which the balloon reaches its labeled diameter.

RBP (Rated Burst Pressure): The pressure at which the manufacturer has 95% confidence that 99.9% of balloons will not burst upon single inflation.

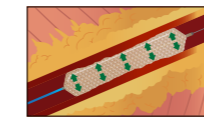
Compliance: The amount of diameter growth in the balloon between nominal and rated burst pressure.



A compliant balloon will expand in diameter as atmospheres are increased.



- Compliant balloons may "dogbone or hourglass" around tight calcified lesions.
- Non-compliant balloons maintain fairly constant diameter regardless of pressure and will not stretch or dogbone around a lesion.



- Ultra non-compliant balloons have the least amount of growth between nominal and RBP, concentrating pressure against the lesion. Compliance charts are not required.

NOTE: Compliance should not be confused with "balloon waist" during inflation, which is normal for all types of balloons.

Pushability: Ability to successfully push catheter to the lesion.

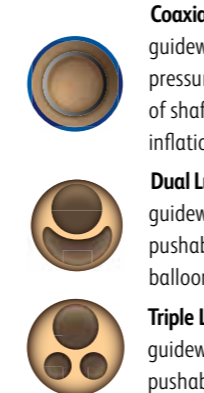
Trackability: Ease at which catheter tracks over the guidewire in straight or angled anatomy.

MATERIAL



- Fiber:** The most non-compliant material due to a strong fiber pattern created from individual strands of material.
- PET / PE blend:** Polyethylene terephthalate.
- Nylon:** More compliant material than PET but more puncture resistant.

CATHETER SHAFT



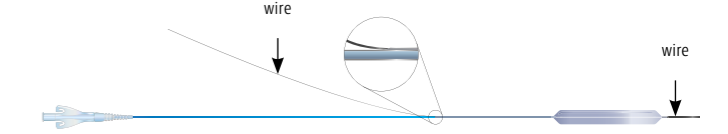
- Coaxial:** A coaxial shaft has a large inflation lumen and a guidewire lumen. This design allows the balloon to hold greater pressure than a multi-lumen catheter and decreases likelihood of shaft rupture due to high pressures. It also allows for rapid inflation/deflation times while maintaining good pushability.
- Dual Lumen:** A dual lumen shaft has an inflation lumen and a guidewire lumen. Due to the balance between good trackability/ pushability and inflation / deflation times, most standard balloons have a dual lumen.
- Triple Lumen:** A triple lumen shaft has two inflation lumens and a guidewire lumen. Triple lumen shafts allow for good track ability/ pushability.

Inflation/Deflation Times: Time required to fully inflate and deflate balloon to and from rated burst pressure. Inflation/deflation time is directly related to shaft working length (cm), diameter, and type (e.g., coaxial). Inflation/deflation times will increase with longer shaft working length, smaller shaft diameter and dual/ triple lumen.

Over-the-Wire (OTW): Wire enters shaft through proximal y-adapter and exits through the tip of the balloon.



RX (Rapid Exchange): Wire enters shaft proximal to balloon and exits through the tip.

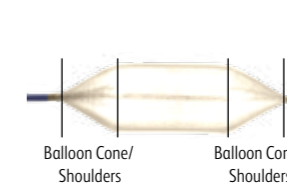


Working Length: Shaft length (cm) from bifurcate to tip of balloon.

Total Length: Working length plus the additional length outside the sheath.

Guidewire Length: Should be twice the total length of the balloon to facilitate loading product without losing access (for OTW; this rule does not apply to RX as the guidewire can be shorter).

BALLOON CONE / SHOULDERS



Balloon Cone Angle: Angle between the guidewire lumen and the portion of the balloon coming off the shaft and tip (balloon shoulders). A shallow cone angle offers a more gradual taper, smaller sheath compatibility and longer cone.

Balloon Cone Length: Horizontal distance from end of balloon to balloon shoulders.

Balloon Working Length: Horizontal distance between the shoulders of the balloon.

PROFILE

Crossing Profile: The diameter of the largest balloon profile along the distal half of the length of the deflated balloon and at the catheter tip (including the inner member or wire).

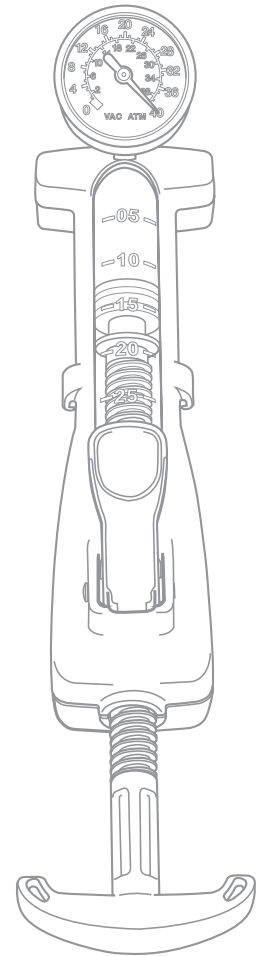
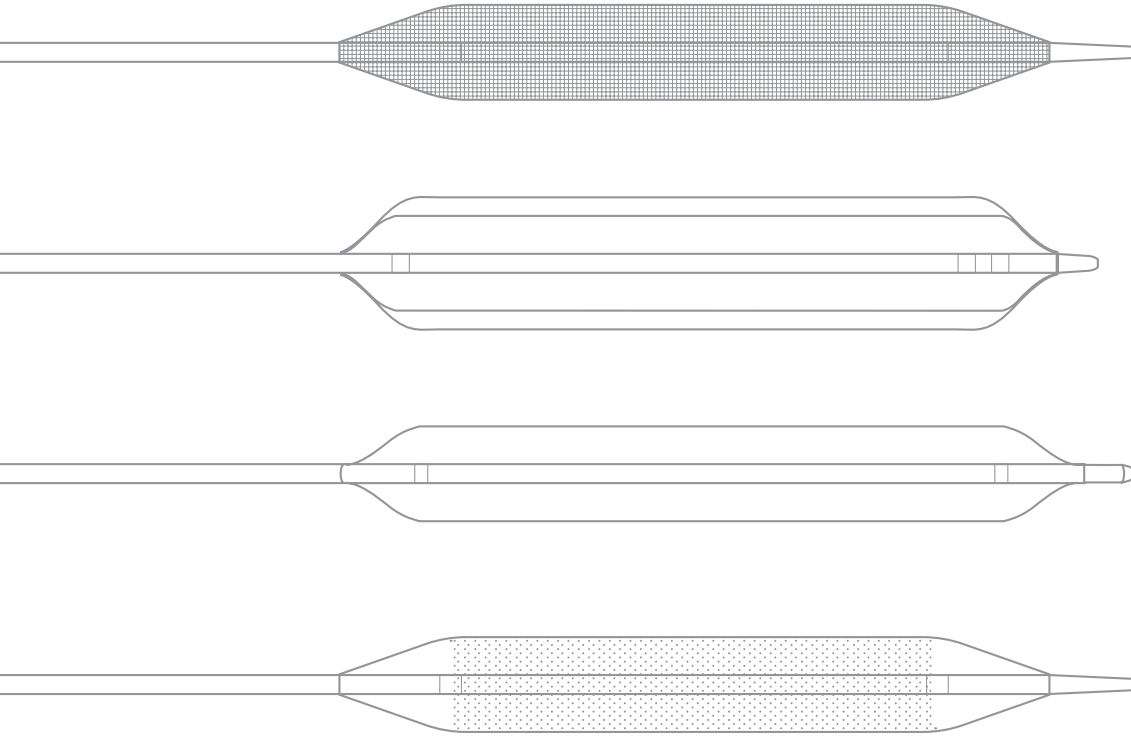
Introducer Sheath Profile: The internal diameter of the introducer. It is important to ensure that the catheter shaft outer diameter is less than the Introducer Sheath Profile in order to assure compatibility.

Tip Entry Profile: The diameter at the most distal portion of the tip of the balloon.

Rupture Mode: The manner in which a balloon bursts.

Pin Hole Rupture: Fiber-based balloons may rupture with a small hole in its material. Other materials often do not have this type of rupture because the material is more likely to rip, since it is not supported by fiber.

Longitudinal Rupture: A rip that runs lengthwise on the balloon. **Circumferential Rupture:** A rip that encircles the balloon. This is the most catastrophic type of rupture due to its risk of balloon material separation and embolization.



bd.com

